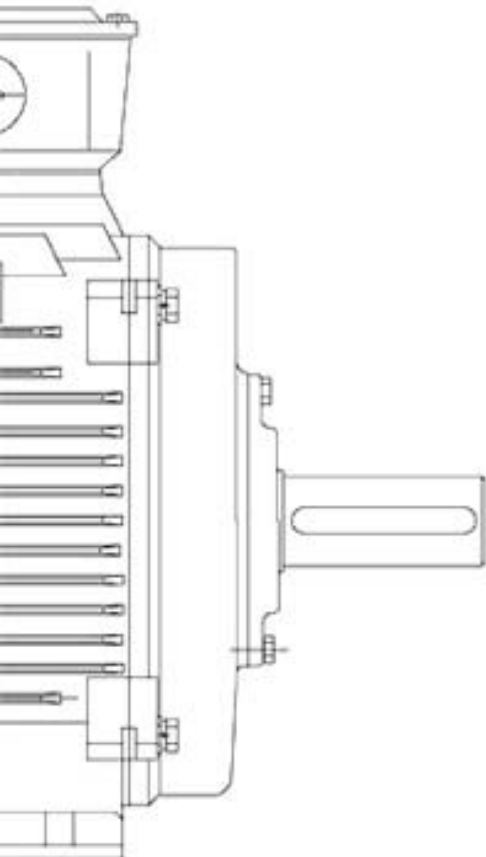


Auswahltabellen/ Technischer Katalog



Drehstrommotoren Serie HJN IE2

Graugußgehäuse BG 80 – 355
Leistungen von 0,75 – 375,0 kW
Spannung: 230/ 400V – 400/ 690V, 50Hz
Drehzahlen: 3000, 1500, 1000 rpm



Motors for the long run



TECHNICAL SPECIFICATIONS 2 POLE (50Hz) IE2

Motor Type	Rated Power		Rated Current		Full Load-Spee	Power-Factor	Efficiency	I _{start} / I _n	T _{start} / T _n	T _{max} / T _n	Moment of inertia	Weight
Motor Typ	Nennleistung		Nennstrom		Nenn-drehzahl	Leistungs-factor	Wirkungs-grad	I _s / I _n	M _s / M _n	M _{klipp} / M _n	Trägheits-moment	Gewicht
	(kW)	(HP)	400V(A)	415V(A)	(1/min)	COSφ(-)	η(%)	(-)	(-)	(-)	J(kgm ²)	(kg)
HJN 80K2	0.75	1.0	1.69	1.62	2825	0.83	77.4	6.26	2.66	2.80	0.00082	16
HJN 80G2	1.1	1.5	2.37	2.29	2825	0.84	79.6	6.30	2.64	2.75	0.00104	17
HJN 90S2	1.5	2.0	3.17	3.06	2840	0.84	81.3	6.97	2.77	2.98	0.001	23
HJN 90L2	2.2	3.0	4.49	4.33	2840	0.85	83.2	6.99	3.19	3.09	0.002	26
HJN 100L2	3	4.0	5.88	5.67	2865	0.87	84.6	7.50	3.43	3.13	0.00324	34
HJN 112M2	4	5.5	7.65	7.37	2865	0.88	85.8	7.78	2.69	3.25	0.007	42
HJN 132S2	5.5	7.5	10.37	9.99	2905	0.88	87	7.81	2.23	3.08	0.0119	59
HJN 132SX2	7.5	10.0	13.96	13.46	2900	0.88	88.1	7.73	2.27	3.22	0.0139	62
HJN 160M2	11	15.0	19.96	19.23	2940	0.89	89.4	7.46	2.38	2.89	0.043	117
HJN 160MX2	15	20.0	26.94	25.97	2940	0.89	90.3	7.50	2.64	3.02	0.052	127
HJN 160L2	18.5	25.0	32.64	31.46	2940	0.90	90.9	7.50	2.86	3.14	0.065	149
HJN 180M2	22	30.0	38.65	37.25	2950	0.90	91.3	8.41	2.97	3.42	0.1056	188
HJN 200L2	30	40.0	52.30	50.41	2950	0.90	92	7.28	2.47	3.12	0.157	230
HJN 200LX2	37	50.0	64.15	61.83	2950	0.90	92.5	7.76	2.59	3.26	0.177	245
HJN 225M2	45	60.0	77.69	74.88	2965	0.90	92.9	7.80	2.78	3.40	0.302	330
HJN 250M2	55	75.0	94.64	91.22	2970	0.90	93.2	7.80	2.79	3.48	0.398	445
HJN 280S2	75	100.0	128.24	123.60	2970	0.90	93.8	7.36	2.59	3.11	0.678	565
HJN 280M2	90	120.0	151.71	146.22	2970	0.91	94.1	7.80	3.22	3.24	0.852	645
HJN 315S2	110	150.0	185.03	178.34	2975	0.91	94.3	7.77	2.32	3.54	1.436	920
HJN 315M2	132	180.0	221.33	213.33	2975	0.91	94.6	7.89	2.43	3.33	1.723	970
HJN 315L2	160	215.0	267.71	258.03	2975	0.91	94.8	7.43	2.27	3.27	1.953	1170
HJN 315LX2	200	270.0	333.93	321.86	2970	0.91	95	8.00	3.05	3.84	2.527	1200
HJN 355M2	250	335.0	422.05	406.80	2985	0.90	95	6.77	2.07	3.14	3.92	1690
HJN 355L2	280	375.0	472.70	455.61	2985	0.90	95	6.50	2.00	2.50	4.12	1820
HJN 355LX2	315	420.0	531.79	512.56	2985	0.90	95	7.27	2.38	3.28	4.17	1870

TECHNICAL SPECIFICATIONS 4 POLE (50Hz) IE2

Motor Type	Rated Power		Rated Current		Full Load-Spee	Power-Factor	Efficiency	I _{start} / I _n	T _{start} / T _n	T _{max} / T _n	Moment of inertia	Weight
Motor Typ	Nennleistung		Nennstrom		Nenn-drehzahl	Leistungs-factor	Wirkungs-grad	I _a / I _n	M _a / M _n	M _{kipp} / M _n	Trägheits-moment	Gewicht
	(kW)	(HP)	400V(A)	415V(A)	(1/min)	COSφ(-)	η(%)	(-)	(-)	(-)	J(kgm ²)	(kg)
HJN 80G4	0.75	1.0	1.81	1.75	1415	0.75	79.6	5.84	3.11	3.27	0.002	19
HJN 90S4	1.1	1.5	2.53	2.44	1395	0.77	81.4	6.03	2.84	3.01	0.0023	23
HJN 90L4	1.5	2.0	3.31	3.19	1395	0.79	82.8	6.21	3.11	2.98	0.003	29
HJN 100L4	2.2	3.0	4.65	4.48	1425	0.81	84.3	7.50	3.20	3.63	0.00817	35
HJN 100LX4	3	4.0	6.10	5.88	1425	0.83	85.5	7.23	3.06	3.52	0.00919	39
HJN 112M4	4	5.5	8.13	7.84	1440	0.82	86.6	7.05	2.21	2.99	0.015	45
HJN 132S4	5.5	7.5	10.91	10.51	1450	0.83	87.7	7.80	2.51	3.13	0.0318	66
HJN 132M4	7.5	10.0	14.53	14.00	1450	0.84	88.7	7.81	2.58	3.07	0.042	80
HJN 160M4	11	15.0	21.05	20.29	1465	0.84	89.8	7.30	2.34	2.69	0.09	122
HJN 160L4	15	20.0	28.11	27.10	1465	0.85	90.6	7.69	2.42	2.64	0.118	140
HJN 180M4	18.5	25.0	34.05	32.82	1470	0.86	91.2	7.65	2.41	3.57	0.1720	181
HJN 180L4	22	30.0	40.31	38.85	1470	0.86	91.6	7.74	2.62	3.34	0.1992	196
HJN 200L4	30	40.0	54.55	52.58	1470	0.86	92.3	7.32	2.28	3.03	0.332	235
HJN 225S4	37	50.0	66.22	63.83	1480	0.87	92.7	7.31	2.51	3.10	0.538	306
HJN 225M4	45	60.0	80.19	77.29	1480	0.87	93.1	6.94	2.51	2.87	0.632	343
HJN 250M4	55	75.0	97.59	94.07	1480	0.87	93.5	7.22	2.18	3.07	0.761	455
HJN 280S4	75	100.0	132.38	127.59	1480	0.87	94	7.55	2.54	3.03	1.631	620
HJN 280M4	90	120.0	158.51	152.78	1480	0.87	94.2	7.75	2.71	3.02	1.873	695
HJN 315S4	110	150.0	190.93	184.03	1480	0.88	94.5	7.04	2.28	3.23	3.035	925
HJN 315M4	132	180.0	228.63	220.37	1480	0.88	94.7	6.67	2.07	3.13	3.415	1010
HJN 315L4	160	215.0	273.44	263.55	1480	0.89	94.9	7.28	2.32	3.51	4.119	1080
HJN 315LX4	200	270.0	341.08	328.75	1480	0.89	95.1	7.30	2.34	3.32	5.203	1200
HJN 355M4	250	333.3	426.35	410.94	1485	0.89	95.1	7.88	2.27	3.47	8.79	1720
HJN 355L4	280	375.0	472.20	455.13	1485	0.90	95.1	7.90	2.10	2.60	9.56	1830
HJN 355LX4	315	420.0	531.23	512.03	1485	0.90	95.1	7.20	2.08	3.13	10.133	1920
HJN 355LY4	355	475.0	598.68	577.04	1485	0.90	95.1	7.61	2.19	3.21	10.898	2050



TECHNICAL SPECIFICATIONS 6 POLE (50Hz) IE2

Motor Type	Rated Power		Rated Current		Full Load-Spee	Power-Factor	Efficiency	I _{start} / I _n	T _{start} / T _n	T _{max} / T _n	Moment of inertia	Weight
Motor Typ	Nennleistung		Nennstrom		Nenn-drehzahl	Leistungs-factor	Wirkungs-grad	I _s / I _n	M _s / M _n	M _{kipp} / M _n	Trägheits-moment	Gewicht
	(kW)	(HP)	400V(A)	415V(A)	(1/min)	COSφ(-)	η(%)	(-)	(-)	(-)	J(kgm ²)	(kg)
HJN 90S6	0.75	1.0	1.98	1.91	920	0.72	75.9	4.27	2.22	2.72	0.00448	24
HJN 90L6	1.1	1.5	2.78	2.68	920	0.73	78.1	5.03	2.93	3.06	0.006	26
HJN 100L6	1.5	2.0	3.57	3.44	920	0.76	79.8	6.03	2.64	3.43	0.008	34
HJN 112M6	2.2	3.0	5.11	4.92	950	0.76	81.8	5.83	2.78	3.23	0.01326	41
HJN 132S6	3	4.0	6.84	6.59	960	0.76	83.3	6.64	2.26	3.06	0.0358	58
HJN 132M6	4	5.5	8.98	8.66	965	0.76	84.6	7.69	2.44	3.32	0.0466	71
HJN 132MX6	5.5	7.5	11.99	11.56	965	0.77	86.0	7.24	2.30	3.21	0.0573	78
HJN 160M6	7.5	10.0	16.12	15.54	970	0.77	87.2	7.66	2.42	3.57	0.114	119
HJN 160L6	11	15.0	22.95	22.12	970	0.78	88.7	7.66	2.41	3.36	0.153	139
HJN 180L6	15	20.0	29.80	28.72	975	0.81	89.7	6.99	2.62	3.04	0.2631	190
HJN 200L6	18.5	25.0	36.47	35.15	980	0.81	90.4	7.40	2.43	3.09	0.397	220
HJN 200LX6	22	30.0	42.09	40.57	980	0.83	90.9	7.54	2.68	3.08	0.46	230
HJN 225M6	30	40.0	56.22	54.18	980	0.84	91.7	7.80	2.86	3.12	0.752	324
HJN 250M6	37	50.0	67.35	64.92	985	0.86	92.2	6.23	2.01	2.68	0.916	415
HJN 280S6	45	60.0	81.48	78.53	985	0.86	92.7	7.51	2.63	3.01	1.7950	555
HJN 280M6	55	75.0	99.15	95.57	985	0.86	93.1	7.40	2.72	2.95	2.171	640
HJN 315S6	75	100.0	134.34	129.49	985	0.86	93.7	6.53	2.00	2.85	3.538	861
HJN 315M6	90	120.0	160.70	154.89	985	0.86	94	6.60	2.04	2.71	4.187	940
HJN 315L6	110	150.0	195.78	188.71	985	0.86	94.3	7.03	2.27	2.90	5.199	1110
HJN 315LX6	132	180.0	231.50	223.13	985	0.87	94.6	7.20	2.32	2.91	5.993	1175
HJN 355M6	160	215.0	276.84	266.83	985	0.88	94.8	6.75	1.93	3.06	8.57	1690
HJN 355MX6	180	240.0	311.44	300.18	985	0.88	94.8	6.80	1.90	2.83	9.527	1770
HJN 355MY6	200	270.0	345.32	332.83	985	0.88	95.0	7.09	1.99	3.05	10.24	1870
HJN 355L6	225	300.0	388.48	374.44	985	0.88	95.0	7.10	2.00	2.95	11.19	1900
HJN 355LX6	250	335.0	431.64	416.04	985	0.88	95.0	7.04	1.87	3.29	12.62	1980
HJN 355LY6	280	375.0	483.44	465.97	985	0.88	95.0	7.00	1.90	2.50	13.337	2060

TECHNICAL SPECIFICATIONS 2 POLE (60Hz)

Motor Type	Rated Power at:			Rated Current at:			Full Load-Speed	Power-Factor	Efficiency	Weight
Motor Typ	Nenleistung bei:			Nennstrom bei:			Nenn-drehzahl	Leistungs-factor	Wirkungs-grad	Gewicht
	440V 60Hz (kW)	460V 60Hz (kW)	480V 60Hz (kW)	440V(A)	460V(A)	480V(A)	(1/min)	COSφ(-)	η(%)	(kg)
HJN 80K2	0.86	0.9	0.9	1.77	1.76	1.69	3395	0.83	77.2	16
HJN 80G2	1.27	1.3	1.32	2.48	2.47	2.37	3395	0.84	79.8	17
HJN 90S2	1.73	1.8	1.8	3.31	3.31	3.17	3410	0.84	81.3	23
HJN 90L2	2.53	2.64	2.64	4.69	4.69	4.49	3410	0.85	83.2	26
HJN 100L2	3.45	3.60	3.6	6.15	6.14	5.88	3475	0.87	84.6	34
HJN 112M2	4.60	4.8	4.8	8.00	7.98	7.65	3485	0.88	85.8	42
HJN 132S2	6.33	6.6	6.6	10.9	10.9	10.4	3490	0.88	86.7	59
HJN 132SX2	8.63	9.0	9	14.6	14.6	14	3480	0.88	87.9	62
HJN 160M2	12.7	13.2	13.2	20.9	20.9	20	3535	0.89	89.2	117
HJN 160MX2	17.3	18.0	18	28.1	28.1	26.9	3535	0.89	90.4	127
HJN 160L2	21.3	22.2	22.2	34.1	34.0	32.6	3535	0.9	91.0	149
HJN 180M2	25.3	26.4	26.4	40.4	40.3	38.6	3540	0.9	91.4	188
HJN 200L2	34.5	36.0	36	54.4	54.3	52	3540	0.9	92.5	230
HJN 200LX2	42.6	44.4	44.4	66.9	66.8	64	3540	0.9	92.7	250
HJN 225M2	51.8	54.0	54	81.2	81.1	77.7	3555	0.9	92.9	330
HJN 250M2	63.3	66.0	66	99.0	98.8	94.7	3565	0.9	93.1	445
HJN 280S2	86.3	90.0	90	134	134	128	3560	0.9	94.0	565
HJN 280M2	103.5	108.0	108	159	159	152	3560	0.91	93.9	645
HJN 315S2	127	132	132	193	193	185	3570	0.91	94.3	920
HJN 315M2	152	158	158	232	231	221	3570	0.91	94.5	970
HJN 315L2	184	192	192	280	280	268	3570	0.91	94.7	1170



TECHNICAL SPECIFICATIONS 4 POLE (60Hz)

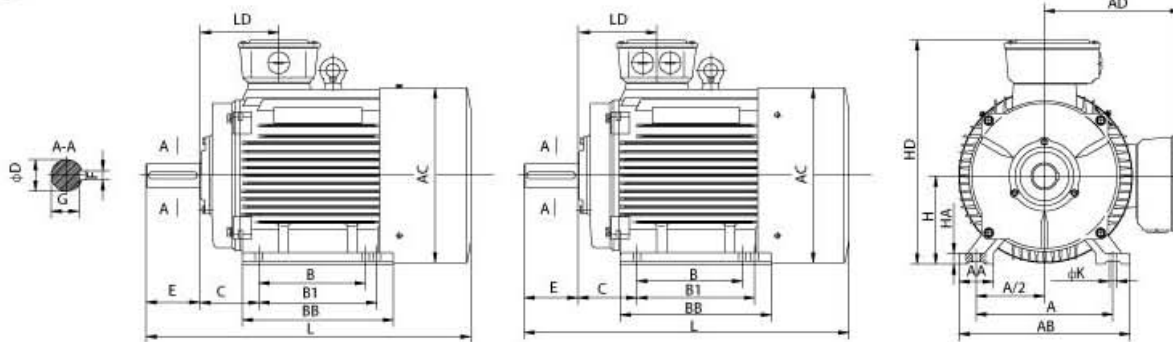
Motor Type	Rated Power at:			Rated Current at:			Full Load-Speed	Power-Factor	Efficiency	Weight
Motor Typ	Nenleistung bei:			Nennstrom bei:			Nenn-drehzahl	Leistungs-factor	Wirkungs-grad	Gewicht
	440V 60Hz (kW)	460V 60Hz (kW)	480V 60Hz (kW)	440V(A)	460V(A)	480V(A)	(1/min)	COSφ(-)	η(%)	(kg)
HJN 80G4	0.86	0.9	0.9	1.89	1.89	1.81	1690	0.75	79.7	19
HJN 90S4	1.27	1.3	1.32	2.65	2.64	2.53	1675	0.77	81.5	23
HJN 90L4	1.73	1.8	1.8	3.45	3.44	3.3	1675	0.79	83.1	29
HJN 100L4	2.53	2.6	2.64	4.86	4.85	4.65	1720	0.81	84.3	35
HJN 100LX4	3.45	3.6	3.6	6.38	6.37	6.1	1720	0.83	85.5	39
HJN 112M4	4.60	4.8	4.8	8.50	8.48	8.13	1740	0.82	86.6	45
HJN 132S4	6.33	6.6	6.6	11.4	11.4	10.9	1745	0.83	87.8	66
HJN 132M4	8.63	9.0	9	15.2	15.1	14.5	1745	0.84	88.9	80
HJN 160M4	12.7	13.2	13.2	21.7	21.7	20.8	1765	0.85	89.8	122
HJN 160L4	17.3	18.0	18	29.4	29.3	28.1	1765	0.85	90.6	140
HJN 180M4	21.3	22.2	22.2	35.5	35.5	34	1765	0.86	91.3	181
HJN 180L4	25.3	26.4	26.4	42.1	42.1	40.3	1765	0.86	91.6	196
HJN 200L4	34.5	36.0	36.1	57.5	57.4	55	1765	0.86	91.8	240
HJN 225S4	42.6	44.4	44.4	69.2	69.1	66.2	1775	0.87	92.7	306
HJN 225M4	51.8	54.0	54	83.8	83.7	80.2	1775	0.87	93.1	343
HJN 250M4	63.3	66.0	66	102	102	97.8	1775	0.87	93.3	455
HJN 280S4	86.3	90.0	90	138	138	132	1780	0.87	94.3	620
HJN 280M4	104	108.0	108	166	166	159	1780	0.87	93.9	695
HJN 315S4	127	132	132	200	199	191	1775	0.88	94.5	925
HJN 315M4	152	158	158	239	238	228	1775	0.88	94.7	1010
HJN 315L4	184	192	192	285	285	273	1775	0.89	95.1	1080
HJN-355M4	288	300	300	445	445	426	1785	0.89	95.2	1720
HJN-355L4	322	336	336	493	493	472	1785	0.9	95.1	1830
HJN-355LX4	362	378	378	555	554	531	1785	0.9	95.1	1920
HJN-355LY4	408	426	426	625	624	598	1785	0.9	95.2	2050

TECHNICAL SPECIFICATIONS 6 POLE (60Hz)

Motor Type	Rated Power at:			Rated Current at:			Full Load-Speed	Power-Factor	Efficiency	Weight
Motor Typ	Nenleistung bei:			Nennstrom bei:			Nenn-drehzahl	Leistungs-factor	Wirkungs-grad	Gewicht
	440V 60Hz (kW)	460V 60Hz (kW)	480V 60Hz (kW)	440V(A)	460V(A)	480V(A)	(1/min)	COSφ(-)	η(%)	(kg)
HJN 90S6	0.86	0.9	0.9	2.07	2.07	1.98	1105	0.72	75.9	24
HJN 90L6	1.27	1.32	1.32	2.92	2.91	2.79	1105	0.73	78.0	26
HJN 100L6	1.73	1.80	1.8	3.74	3.73	3.57	1130	0.76	79.8	34
HJN 112M6	2.53	2.64	2.64	5.34	5.33	5.11	1745	0.76	81.8	41
HJN 132S6	3.45	3.6	3.6	7.15	7.14	6.84	1160	0.76	83.3	58
HJN 132M6	4.60	4.8	4.8	9.39	9.37	8.98	1165	0.76	84.6	71
HJN 132MX6	6.33	6.6	6.6	12.5	12.5	12	1165	0.77	85.9	78
HJN 160M6	8.6	9.0	9	16.6	16.6	15.9	1170	0.78	87.3	119
HJN 160L6	12.7	13.2	13.2	23.7	23.7	22.7	1170	0.79	88.5	139
HJN 180L6	17.3	18.0	18	31.2	31.1	29.8	1175	0.81	89.7	190
HJN 200L6	21.3	22.2	22.2	37.6	37.6	36	1175	0.81	91.6	220
HJN 200LX6	25.3	26.4	26.4	45.0	44.9	43	1175	0.81	91.2	230
HJN 225M6	34.5	36.0	36	58.8	58.6	56.2	1175	0.84	91.7	324
HJN 250M6	42.6	44.4	44.4	70.5	70.3	67.4	1180	0.86	92.1	415
HJN 280S6	51.8	54	54	84.7	85	81	1180	0.86	93.2	555
HJN 280M6	63.3	66	66	104	103	99	1180	0.86	93.2	640
HJN 315S6	86.3	90	90	140	140	134	1180	0.86	93.9	861
HJN 315M6	104	108	108	168	168	161	1180	0.86	93.8	940
HJN 315L6	127	132	132	205	205	196	1180	0.86	94.2	1110
HJN 315Lx6	152	158	158	242	241	231	1180	0.87	94.6	1175
HJN 355M6	184	192	192	289	288	276	1190	0.88	95.1	1690
HJN 355MX6	207	215	215	327	325	311	1190	0.88	94.5	1770
HJN 355MY6	230	240	240	361	360	345	1190	0.88	95.1	1870
HJN 355L6	259	270	270	406	405	388	1190	0.88	95.1	1900
HJN 355LX6	288	300	300	451	450	431	1190	0.88	95.1	1980
HJN 355LY6	322	336	336	505	504	483	1190	0.88	95.1	2060



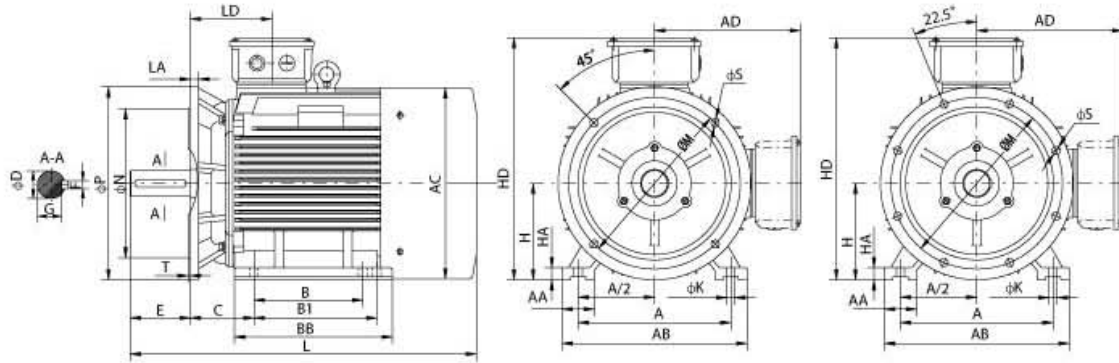
■ B3



B3

Frame size Baugröße	Poles Polig	Mounting dimensions / Montage- Abmessungen(mm)											Overall dimensions / Gesamtabmessungen(mm)								
		A	B	B1	C	D	E	F	G	H	K	AA	AB	AC	AD	HA	HD	BB	LD	L	
80	2-6	125	100	—	50	19	40	6	15.5	80	10	35	160	160	150	10	225	130	75	285	
90S	2-6	140	100	—	56	24	50	8	20	90	10	36	180	175	155	12	245	140	75	335	
90L	2-6	140	125	—	56	24	50	8	20	90	10	36	180	175	155	12	245	165	75	360	
100L	2-6	160	140	—	63	28	60	8	24	100	12	40	200	200	175	14	270	176	83	375	
112M	2-6	190	140	—	70	28	60	8	24	112	12	45	230	225	190	15	305	180	87	420	
132S	2-6	216	140	—	89	38	80	10	33	132	12	55	265	260	220	18	350	188	102	465	
132M	2-6	216	178	—	89	38	80	10	33	132	12	55	265	260	220	18	350	226	102	505	
160M	2-6	254	210	—	108	42	110	12	37	160	15	65	315	315	265	20	425	260	146	608	
160L	2-6	254	254	—	108	42	110	12	37	160	15	65	315	315	265	20	425	305	146	652	
180M	2, 4	279	241	—	121	48	110	14	42.5	180	15	70	350	360	280	22	460	315	161	690	
180L	4-6	279	279	—	121	48	110	14	42.5	180	15	70	350	360	280	22	460	350	161	730	
200L	2-6	318	305	—	133	55	110	16	49	200	19	70	390	400	310	25	510	370	186	760	
225S	4, 6	356	286	—	149	60	140	18	53	225	19	75	435	450	335	28	555	370	189	810	
225M	2	356	311	—	149	55	110	16	49	225	19	75	435	450	335	28	555	395	189	805	
	4-6	356	311	—	149	60	140	18	53	225	19	75	435	450	335	28	555	395	189	835	
250M	2	406	349	—	168	60	140	18	53	250	24	80	484	485	375	30	625	445	207	910	
	4-6	406	349	—	168	65	140	18	58	250	24	80	484	485	375	30	625	445	207	910	
280S	2	457	368	—	190	65	140	18	58	280	24	85	545	550	405	35	685	490	215	985	
	4-6	457	368	—	190	75	140	20	67.5	280	24	85	545	550	405	35	685	490	215	1005	
280M	2	457	419	—	190	65	140	18	58	280	24	85	545	550	405	35	685	540	215	1030	
	4-6	457	419	—	190	75	140	20	67.5	280	24	85	545	550	405	35	685	540	215	1060	
315S	2	508	406	—	216	65	140	18	58	315	28	120	630	625	530	45	845	570	257	1180	
	4-6	508	406	—	216	80	170	22	71	315	28	120	630	625	530	45	845	570	257	1210	
315M, L	2	508	457	508	216	65	140	18	58	315	28	120	630	625	530	45	845	680	257	1290	
	4-6	508	457	508	216	80	170	22	71	315	28	120	630	625	530	45	845	680	257	1320	
355M	2	610	500	560	254	75	140	20	67.5	355	28	120	730	710	615	52	970	750	284	1486	
	4-6	610	500	560	254	95	170	25	86	355	28	120	730	710	615	52	970	750	284	1516	
355L	2	610	560	630	254	75	140	20	67.5	355	28	120	730	710	615	52	970	750	284	1486	
	4-6	610	560	630	254	95	170	25	86	355	28	120	730	710	615	52	970	750	284	1516	

■ B35

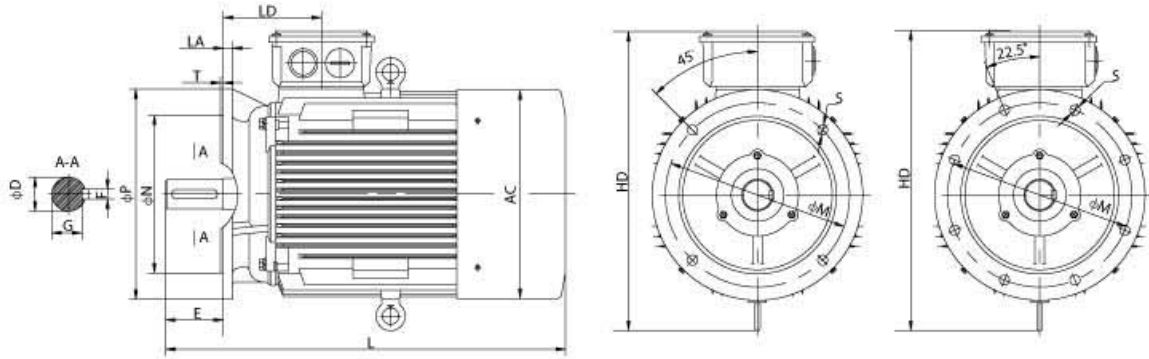


B35

Frame size Baugröße	Poles Polig	Mounting dimensions / Montage- Abmessungen(mm)															Overall dimensions / Gesamtabmessungen(mm)										
		A	B	B1	C	D	E	F	G	H	K	M	N	P	R	S	T	AA	AB	AC	AD	BB	HA	HD	LA	LD	L
80M	2~6	125	100	—	50	19	40	6	15.5	80	10	165	130	200	0	4-Φ12	3.5	35	160	160	150	130	10	225	12	75	285
90S	2~6	140	100	—	56	24	50	8	20	90	10	165	130	200	0	4-Φ12	3.5	36	180	175	155	140	12	245	12	75	335
90L	2~6	140	125	—	56	24	50	8	20	90	10	165	130	200	0	4-Φ12	3.5	36	180	175	155	165	12	245	12	75	360
100L	2~6	160	140	—	63	28	60	8	24	100	12	215	180	250	0	4-Φ15	4	40	200	200	175	176	14	270	13	83	375
112M	2~6	190	140	—	70	28	60	8	24	112	12	215	180	250	0	4-Φ15	4	45	230	225	190	180	15	305	14	87	420
132S	2~6	216	140	—	89	38	80	10	33	132	12	265	230	300	0	4-Φ15	4	55	265	260	220	188	18	350	14	102	465
132M	2~6	216	178	—	89	38	80	10	33	132	12	265	230	300	0	4-Φ15	4	55	265	260	220	226	18	350	14	102	505
160M	2~6	254	210	—	108	42	110	12	37	160	15	300	250	350	0	4-Φ19	5	65	315	315	260	260	20	425	15	146	608
160L	2~6	254	254	—	108	42	110	12	37	160	15	300	250	350	0	4-Φ19	5	65	315	315	260	305	20	425	15	146	652
180M	2, 4	279	241	—	121	48	110	14	42.5	180	15	300	250	350	0	4-Φ19	5	70	350	360	280	315	22	460	15	161	690
180L	4~6	279	279	—	121	48	110	14	42.5	180	15	300	250	350	0	4-Φ19	5	70	350	360	280	350	22	460	15	161	730
200L	2~6	318	305	—	133	55	110	16	49	200	19	350	300	400	0	4-Φ19	5	70	390	400	310	370	25	510	17	186	760
225S	4, 6	356	286	—	149	60	140	18	53	225	19	400	350	450	0	8-Φ19	5	75	435	450	335	370	28	555	20	189	810
225M	2	356	311	—	149	55	110	16	49	225	19	400	350	450	0	8-Φ19	5	75	435	450	335	395	28	555	20	189	805
	4~6	356	311	—	149	60	140	18	53	225	19	400	350	450	0	8-Φ19	5	75	435	450	335	395	28	555	20	189	835
250M	2	406	349	—	168	60	140	18	53	250	24	500	450	550	0	8-Φ19	5	80	484	485	375	445	30	625	22	207	910
	4~6	406	349	—	168	65	140	18	58	250	24	500	450	550	0	8-Φ19	5	80	484	485	375	445	30	625	22	207	910
280S	2	457	368	—	190	65	140	18	58	280	24	500	450	550	0	8-Φ19	5	85	545	550	400	490	35	685	22	215	985
	4~6	457	368	—	190	75	140	20	67.5	280	24	500	450	550	0	8-Φ19	5	85	545	550	400	490	35	685	22	215	1005
280M	2	457	419	—	190	65	140	18	58	280	24	500	450	550	0	8-Φ19	5	85	545	550	400	540	35	685	22	215	1030
	4~6	457	419	—	190	75	140	20	67.5	280	24	500	450	550	0	8-Φ19	5	85	545	550	400	540	35	685	22	215	1060
315S	2	508	406	—	216	65	140	18	58	315	28	600	550	660	0	8-Φ24	6	120	630	625	530	570	45	845	22	257	1180
	4~6	508	406	—	216	80	170	22	71	315	28	600	550	660	0	8-Φ24	6	120	630	625	530	570	45	845	22	257	1210
315M- L	2	508	457	508	216	65	140	18	58	315	28	600	550	660	0	8-Φ24	6	120	630	625	530	680	45	845	22	257	1290
	4~6	508	457	508	216	80	170	22	71	315	28	600	550	660	0	8-Φ24	6	120	630	625	530	680	45	845	22	257	1320
355M	2	610	500	560	254	75	140	20	67.5	355	28	740	680	800	0	8-Φ24	6	120	730	710	615	750	52	970	25	284	1486
	4~6	610	500	560	254	95	170	25	86	355	28	740	680	800	0	8-Φ24	6	120	730	710	615	750	52	970	25	284	1516
355L	2	610	560	630	254	75	140	20	67.5	355	28	740	680	800	0	8-Φ24	6	120	730	710	615	750	52	970	25	284	1486
	4~6	610	560	630	254	95	170	25	86	355	28	740	680	800	0	8-Φ24	6	120	730	710	615	750	52	970	25	284	1516

R= distance from flange to shaft shoulder

■ B5

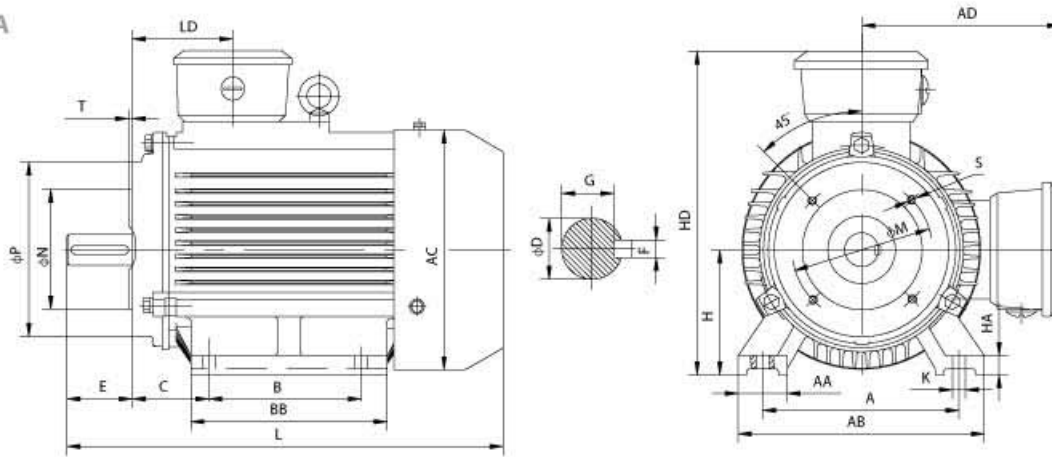


B5

Frame size Buagröße	Poles Polig	Mounting dimensions / Montage- Abmessungen(mm)										Overall dimensions / Gesamtabmessungen(mm)				
		D	E	F	G	M	N	P	R	S	T	AC	HD	LA	LD	L
80M	2~6	19	40	6	15.5	165	130	200	0	4-Φ12	3.5	160	245	12	75	285
90S	2~6	24	50	8	20	165	130	200	0	4-Φ12	3.5	175	245	12	75	335
90L	2~6	24	50	8	20	165	130	200	0	4-Φ12	3.5	175	245	12	75	360
100L	2~6	28	60	8	24	215	180	250	0	4-Φ15	4	200	295	13	83	375
112M	2~6	28	60	8	24	215	180	250	0	4-Φ15	4	225	305	14	87	420
132S	2~6	38	80	10	33	265	230	300	0	4-Φ15	4	260	365	14	102	465
132M	2~6	38	80	10	33	265	230	300	0	4-Φ15	4	260	365	14	102	505
160M	2~6	42	110	12	37	300	250	350	0	4-Φ19	5	315	445	15	146	608
160L	2~6	42	110	12	37	300	250	350	0	4-Φ19	5	315	445	15	146	652
180M	2, 4	48	110	14	42.5	300	250	350	0	4-Φ19	5	360	525	15	161	690
180L	4~6	48	110	14	42.5	300	250	350	0	4-Φ19	5	360	525	15	161	730
200L	2~6	55	110	16	49	350	300	400	0	4-Φ19	5	400	575	17	186	760
225S	4, 6	60	140	18	53	400	350	450	0	8-Φ19	5	450	620	20	189	810
225M	2	55	110	16	49	400	350	450	0	8-Φ19	5	450	620	20	189	805
	4~6	60	140	18	53	400	350	450	0	8-Φ19	5	450	620	20	189	835
250M	2	60	140	18	53	500	450	550	0	8-Φ19	5	485	690	22	207	910
	4~6	65	140	18	58	500	450	550	0	8-Φ19	5	485	690	22	207	910
280S	2	65	140	18	58	500	450	550	0	8-Φ19	5	550	725	22	215	985
	4~6	75	140	20	67.5	500	450	550	0	8-Φ19	5	550	725	22	215	1005
280M	2	65	140	18	58	500	450	550	0	8-Φ19	5	550	725	22	215	1030
	4~6	75	140	20	67.5	500	450	550	0	8-Φ19	5	550	725	22	215	1060

R= distance from flange to shaft shoulder

■ B34A



B34A

Frame size Buagröße	Poles Polig	Mounting dimensions / Montage- Abmessungen(mm)															Overall dimensions / Gesamtabmessungen(mm)							
		A	B	C	D	E	F	G	H	K	M	N	P	R	S	T	AB	AC	AD	BB	HA	HD	LD	L
80M	2~6	125	100	50	19	40	6	15.5	80	10	100	80	120	0	4-M6	3	160	160	150	130	10	225	75	285
90S	2~6	140	100	56	24	50	8	20	90	10	115	95	140	0	4-M8	3	180	175	155	140	12	245	75	335
90L	2~6	140	125	56	24	50	8	20	90	10	115	95	140	0	4-M8	3	180	175	155	165	12	245	75	360
100L	2~6	160	140	63	28	60	8	24	100	12	130	110	160	0	4-M8	3.5	200	200	175	176	14	270	83	375
112M	2~6	190	140	70	28	60	8	24	112	12	130	110	160	0	4-M8	3.5	230	225	190	180	15	305	87	420
132S	2~6	216	140	89	38	80	10	33	132	12	165	130	200	0	4-M10	3.5	265	260	220	188	18	350	102	465
132M	2~6	216	178	89	38	80	10	33	132	12	165	130	200	0	4-M10	3.5	265	260	220	226	18	350	102	505

R= distance from flange to shaft shoulder

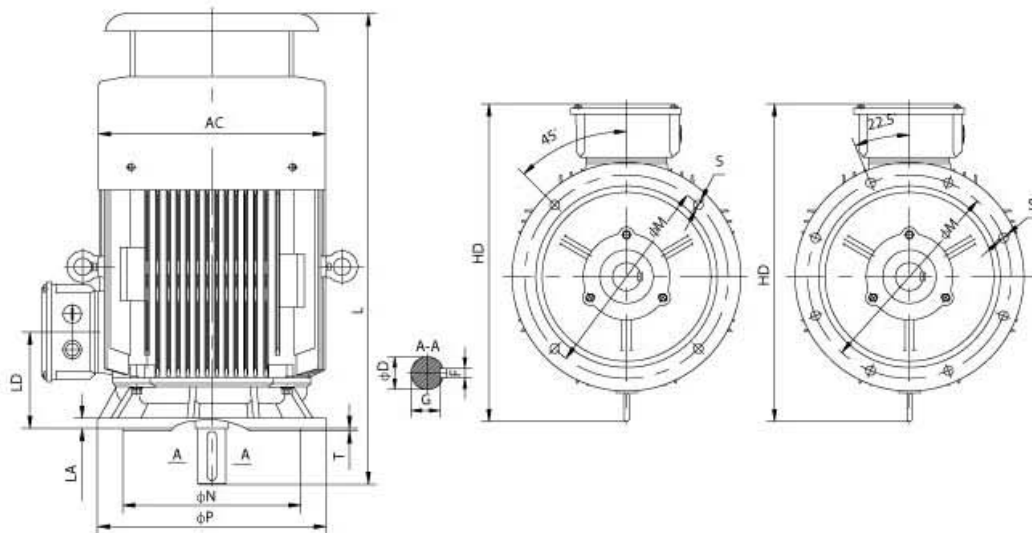
B34B

Frame size Buagröße	Poles Polig	Mounting dimensions / Montage- Abmessungen(mm)															Overall dimensions / Gesamtabmessungen(mm)							
		A	B	C	D	E	F	G	H	K	M	N	P	R	S	T	AB	AC	AD	BB	HA	HD	LD	L
80M	2~6	125	100	50	19	40	6	15.5	80	10	130	110	160	0	4-M8	3.5	160	160	150	130	10	225	75	285
90S	2~6	140	100	56	24	50	8	20	90	10	130	110	160	0	4-M8	3.5	180	175	155	140	12	245	75	335
90L	2~6	140	125	56	24	50	8	20	90	10	130	110	160	0	4-M8	3.5	180	175	155	165	12	245	75	360
100L	2~6	160	140	63	28	60	8	24	100	12	165	130	200	0	4-M10	3.5	200	200	175	176	14	270	83	375
112M	2~6	190	140	70	28	60	8	24	112	12	165	130	200	0	4-M10	3.5	230	225	190	180	15	305	87	420
132S	2~6	216	140	89	38	80	10	33	132	12	215	180	250	0	4-M12	4	265	260	220	188	18	350	102	465
132M	2~6	216	178	89	38	80	10	33	132	12	215	180	250	0	4-M12	4	265	260	220	226	18	350	102	505

R= distance from flange to shaft shoulder



■ V1

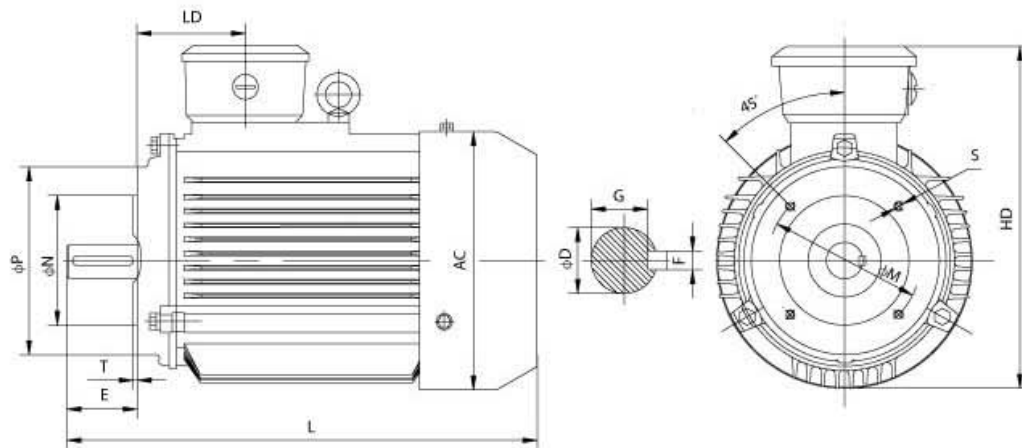


V1

Frame size Baugröße	Poles Polig	Mounting dimensions / Montage- Abmessungen(mm)											Overall dimensions / Gesamtabmessungen(mm)				
		D	E	F	G	M	N	P	R	S	T	AC	HD	LA	LD	L	
80M	2~6	19	40	6	15.5	165	130	200	0	4-φ12	3.5	160	245	12	75	310	
90S	2~6	24	50	8	20	165	130	200	0	4-φ12	3.5	175	245	12	75	365	
90L	2~6	24	50	8	20	165	130	200	0	4-φ12	3.5	175	245	12	75	390	
100L	2~6	28	60	8	24	215	180	250	0	4-φ15	4	200	295	13	83	410	
112M	2~6	28	60	8	24	215	180	250	0	4-φ15	4	225	305	14	87	450	
132S	2~6	38	80	10	33	265	230	300	0	4-φ15	4	260	395	14	102	510	
132M	2~6	38	80	10	33	265	230	300	0	4-φ15	4	260	395	14	102	550	
160M	2~6	42	110	12	37	300	250	350	0	4-φ19	5	315	445	15	146	660	
160L	2~6	42	110	12	37	300	250	350	0	4-φ19	5	315	445	15	146	705	
180M	2, 4	48	110	14	42.5	300	250	350	0	4-φ19	5	360	525	15	161	750	
180L	4~6	48	110	14	42.5	300	250	350	0	4-φ19	5	360	525	15	161	790	
200L	2~6	55	110	16	49	350	300	400	0	4-φ19	5	400	575	17	186	840	
225S	4, 6	60	140	18	53	400	350	450	0	8-φ19	5	450	620	20	189	900	
225M	2	55	110	16	49	400	350	450	0	8-φ19	5	450	620	20	189	895	
	4~6	60	140	18	53	400	350	450	0	8-φ19	5	450	620	20	189	925	
250M	2	60	140	18	53	500	450	550	0	8-φ19	5	490	690	22	207	1005	
	4~6	65	140	18	58	500	450	550	0	8-φ19	5	490	690	22	207	1005	
280S	2	65	140	18	58	500	450	550	0	8-φ19	5	550	725	22	215	1110	
	4~6	75	140	20	67.5	500	450	550	0	8-φ19	5	550	725	22	215	1130	
280M	2	65	140	18	58	500	450	550	0	8-φ19	5	550	725	22	215	1155	
	4~6	75	140	20	67.5	500	450	550	0	8-φ19	5	550	725	22	215	1185	
315S	2	65	140	18	58	600	550	660	0	8-φ24	6	625	960	22	257	1330	
	4~6	80	170	22	71	600	550	660	0	8-φ24	6	625	960	22	257	1360	
315M, L	2	65	140	18	58	600	550	660	0	8-φ24	6	625	960	22	257	1440	
	4~6	80	170	22	71	600	550	660	0	8-φ24	6	625	960	22	257	1470	
355M, L	4~6	95	170	25	86	740	680	800	0	8-φ24	6	979	1006	25	284	1656	

R= distance from flange to shaft shoulder

■ B14B



B14A

Frame size Buagröße	Poles Polig	Mounting dimensions / Montage- Abmessungen(mm)										Overall dimensions / Gesamtabmessungen(mm)			
		D	E	F	G	M	N	P	R	S	T	AC	HD	LD	L
80M	2-6	19	40	6	15.5	100	80	120	0	4-M6	3	160	225	75	285
90S	2-6	24	50	8	20	115	95	140	0	4-M8	3	175	245	75	335
90L	2-6	24	50	8	20	115	95	140	0	4-M8	3	175	245	75	360
100L	2-6	28	60	8	24	130	110	160	0	4-M8	3.5	200	270	83	375
112M	2-6	28	60	8	24	130	110	160	0	4-M8	3.5	225	305	87	420
132S	2-6	38	80	10	33	165	130	200	0	4-M10	3.5	260	350	102	465
132M	2-6	38	80	10	33	165	130	200	0	4-M10	3.5	260	350	102	505

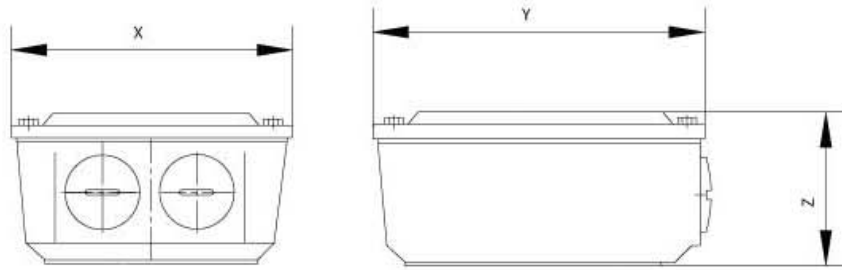
R= distance from flange to shaft shoulder

B14B

Frame size Buagröße	Poles Polig	Mounting dimensions / Montage- Abmessungen(mm)										Overall dimensions / Gesamtabmessungen(mm)			
		D	E	F	G	M	N	P	R	S	T	AC	HD	LD	L
80M	2-6	19	40	6	15.5	130	110	160	0	4-M8	3.5	160	225	75	285
90S	2-6	24	50	8	20	130	110	160	0	4-M8	3.5	175	245	75	335
90L	2-6	24	50	8	20	130	110	160	0	4-M8	3.5	175	245	75	360
100L	2-6	28	60	8	24	165	130	200	0	4-M10	3.5	200	270	83	375
112M	2-6	28	60	8	24	165	130	200	0	4-M10	3.5	225	305	87	420
132S	2-6	38	80	10	33	215	180	250	0	4-M12	4	260	350	102	465
132M	2-6	38	80	10	33	215	180	250	0	4-M12	4	260	350	102	505

R= distance from flange to shaft shoulder





Terminal Box / Klemmenkasten

Frame Size Buagröße	Dia. Of the thread Gewindedurchmesser mm	Overall dimensions Gesamtabmessungen(mm) X×Y×Z mm
80-100	2-M20×1.5	106×108×65
112-132	2-M25×1.5	124×128×78
160-180	2-M32×1.5	158×168×90
200-225	2-M50×1.5	196×216×105
250-280	2-M63×1.5	226×226×127
315	2-M63×1.5	303×303×170
355	4-M63×1.5	330×380×200

Bearings / Lager

Frame Size Buagröße	Driving End / A Seite			Non-driving End / B Seite		
	2(pole)	4(pole)	≥6(pole)	2(pole)	4(pole)	≥6(pole)
80	6204ZZ	6204ZZ	6204ZZ	6204ZZ	6204ZZ	6204ZZ
90	6205ZZ/C3	6205ZZ/C3	6205ZZ	6205ZZ/C3	6205ZZ/C3	6205ZZ
100	6206ZZ/C3	6206ZZ/C3	6206ZZ/C3	6206ZZ/C3	6206ZZ/C3	6206ZZ/C3
112	6306ZZ/C3	6306ZZ/C3	6306ZZ/C3	6306ZZ/C3	6306ZZ/C3	6306ZZ/C3
132	6308ZZ/C3	6308ZZ/C3	6308ZZ/C3	6308ZZ/C3	6308ZZ/C3	6308ZZ/C3
160	6309ZZ/C3	6309ZZ/C3	6309ZZ/C3	6309ZZ/C3	6309ZZ/C3	6309ZZ/C3
180	6311ZZ/C3	6311ZZ/C3	6311ZZ/C3	6311ZZ/C3	6311ZZ/C3	6311ZZ/C3
200	6312ZZ/C3	6312ZZ/C3	6312ZZ/C3	6312ZZ/C3	6312ZZ/C3	6312ZZ/C3
225	6313ZZ/C3	6313ZZ/C3	6313ZZ/C3	6313ZZ/C3	6313ZZ/C3	6313ZZ/C3
250	6314ZZ/C3	6314ZZ/C3	6314ZZ/C3	6314ZZ/C3	6314ZZ/C3	6314ZZ/C3
280	6314C3	6317C3	6317C3	6314C3	6317C3	6317C3
315	6317C3	6319C3	6319C3	6317C3/7317B(V1)	6319C3	6319C3
355	6317C3	6322C3	6322C3	6317C3/7319B(V1)	6322C3	6322C3