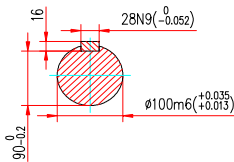
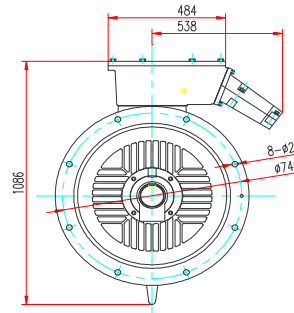
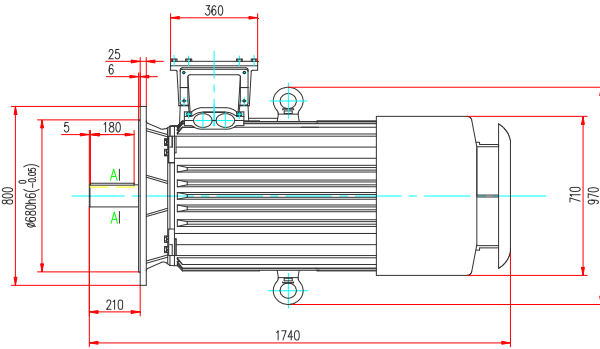


Power is our commodity, the world is our market !



Specification	IEC60034-1
Manufacturer	Dutchi Motors BV
Motor type	DM1-IE2-355LX6
Rated power	250 kW S1 Duty
Speed	990 r.p.m.
Voltage	400 / 690 V
Frequency	50 Hz
Connection	Δ / Y
Amps full load	435 / 251 A
Amps no load	126 A
Enclosure	IP55
Insulation class	F (temp. rise B (80 K))

Max coolant temp.	40 °C
Max altitude	1000 m above sea level
Comment	3 x PTC150 °C

Feature	Cast-iron motor
Weight	1980 kg

Warranty	12~18 months
----------	---------------------

Efficiency class	IE2			
Load data	100%	75%	50%	25%
Efficiency	95	95,1	94,5	91,4 %
Power factor	0,87	0,85	0,78	0,59

Sound pressure level(1m)	71,1 dB(A)
Resistance R20(open)	0,012 Ω
Resistance R20	Δ 0,008 Ω

Full load torque	2406 Nm
DOL Starting torque vs FL torque	1,94
DOL Pull up torque vs FL torque	1,51
DOL Pull out torque vs FL torque	3,56
Star-Delta Starting torque vs FL torque	0,6
Star-Delta Pull up torque vs FL torque	0,47
Star-Delta Pull out torque vs FL torque	1,11
DOL Starting current vs FL current	7,16
Star-Delta Starting current vs FL current	2,23
Rotor Inertia [J]	13,3 kgm²

Bearing DE	6322 C3
Bearing NDE	6320 C3

WI	Change	date	sign
Dutchi Motors B.V.		Description	date
P.O. Box 5390		generated	11-jun-10
NL-6802EJ Arnhem			
tel: +31-(0)26 - 3541 600		dutchi.motors@dutchi.nl	
fax: +31-(0)26 - 3541 650		www.dutchi.com	