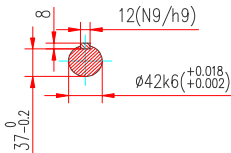
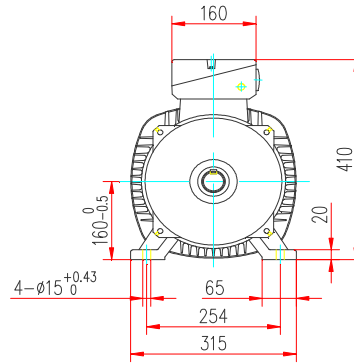
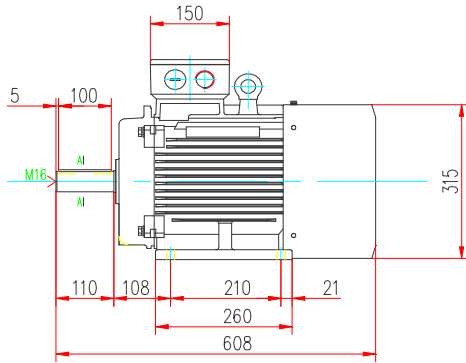


Power is our commodity, the world is our market !

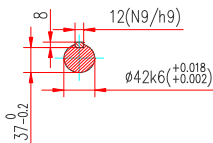
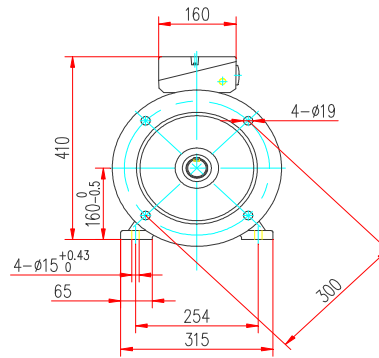
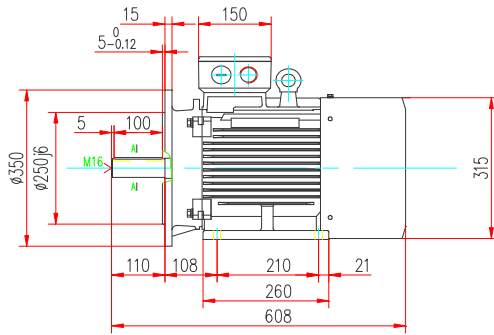


Specification	IEC60034-1
Manufacturer	Dutchi Motors BV
Motor type	DM1-IE2-160MX2
Rated power	15 kW S1 Duty
Speed	2920 r.p.m.
Voltage	400 / 690 V
Frequency	50 Hz
Connection	Δ / Y
Amps full load	26,5 / 15,3 A
Amps no load	7,7 A
Enclosure	IP55
Insulation class	F (temp. rise B (80 K))
Max coolant temp.	40 °C
Max altitude	1000 m above sea level
Comment	3 x PTC150 °C
Feature	Cast-iron motor
Weight	117 kg
Warranty	12~18 months

Efficiency class	IE2			
Load data	100%	75%	50%	25%
Efficiency	90,3	91,1	90,9	87,2 %
Power factor	0,9	0,87	0,82	0,68
Sound pressure level(1m)	73,4 dB(A)			
Resistance R20(open)	0,573 Ω			
Resistance R20	Δ 0,382 Ω			
Full load torque	49 Nm			
DOL Starting torque vs FL torque	2,64			
DOL Pull up torque vs FL torque	1,83			
DOL Pull out torque vs FL torque	3,28			
Star-Delta Starting torque vs FL torque	0,82			
Star-Delta Pull up torque vs FL torque	0,57			
Star-Delta Pull out torque vs FL torque	1,02			
DOL Starting current vs FL current	7,54			
Star-Delta Starting current vs FL current	2,35			
Rotor Inertia [J]	0,052 kgm²			
Bearing DE	6309 2Z C3			
Bearing NDE	6309 2Z C3			

WI	Change	date	sign
Dutchi Motors B.V. P.O. Box 5390 NL-6802EJ Arnhem tel: +31-(0)26 - 3541 600 fax: +31-(0)26 - 3541 650		Description	date
		generated	31-mrt-10
		dutchi.motors@dutchi.nl www.dutchi.com	

Power is our commodity, the world is our market !



Specification	IEC60034-1
Manufacturer	Dutchi Motors BV
Motor type	DM1-IE2-160MX2
Rated power	15 kW S1 Duty
Speed	2920 r.p.m.
Voltage	400 / 690 V
Frequency	50 Hz
Connection	Δ / Y
Amps full load	26,5 / 15,3 A
Amps no load	7,7 A
Enclosure	IP55
Insulation class	F (temp. rise B (80 K))

Max coolant temp.	40 °C
Max altitude	1000 m above sea level
Comment	3 x PTC150 °C

Feature	Cast-iron motor
Weight	117 kg

Warranty **12-18 months**

Efficiency class	IE2			
Load data	100%	75%	50%	25%
Efficiency	90,3	91,1	90,9	87,2 %
Power factor	0,9	0,87	0,82	0,68

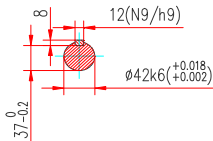
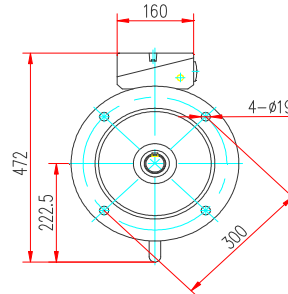
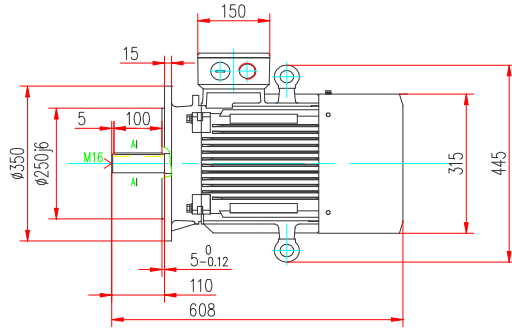
Sound pressure level(1m)	73,4 dB(A)
Resistance R20(open)	0,573 Ω
Resistance R20	0,382 Ω

Full load torque	49 Nm
DOL Starting torque vs FL torque	2,64
DOL Pull up torque vs FL torque	1,83
DOL Pull out torque vs FL torque	3,28
Star-Delta Starting torque vs FL torque	0,82
Star-Delta Pull up torque vs FL torque	0,57
Star-Delta Pull out torque vs FL torque	1,02
DOL Starting current vs FL current	7,54
Star-Delta Starting current vs FL current	2,35
Rotor Inertia [J]	0,052 kgm ²

Bearing DE	6309 2Z C3
Bearing NDE	6309 2Z C3

WI	Change	date	sign
Dutchi Motors B.V.		Description	date
P.O. Box 5390		generated	10-jun-10
NL-6802EJ Arnhem			
tel: +31-(0)26 - 3541 600		dutchi.motors@dutchi.nl	
fax: +31-(0)26 - 3541 650		www.dutchi.com	

Power is our commodity, the world is our market !



Specification	IEC60034-1
Manufacturer	Dutchi Motors BV
Motor type	DM1-IE2-160MX2
Rated power	15 kW S1 Duty
Speed	2920 r.p.m.
Voltage	400 / 690 V
Frequency	50 Hz
Connection	Δ / Y
Amps full load	26,5 / 15,3 A
Amps no load	7,7 A
Enclosure	IP55
Insulation class	F (temp. rise B (80 K))

Max coolant temp.	40 °C
Max altitude	1000 m above sea level
Comment	3 x PTC150 °C

Feature	Cast-iron motor
Weight	117 kg

Warranty	12~18 months
----------	---------------------

Efficiency class	IE2			
Load data	100%	75%	50%	25%
Efficiency	90,3	91,1	90,9	87,2 %
Power factor	0,9	0,87	0,82	0,68

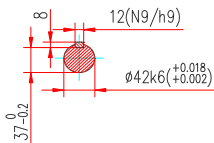
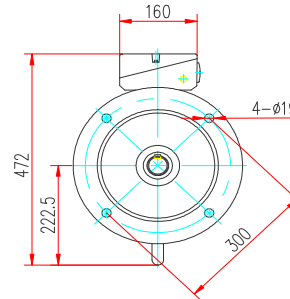
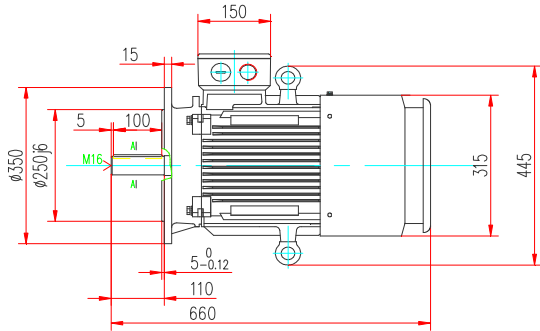
Sound pressure level(1m)	73,4 dB(A)
Resistance R20(open)	0,573 Ω
Resistance R20	Δ 0,382 Ω

Full load torque	49 Nm
DOL Starting torque vs FL torque	2,64
DOL Pull up torque vs FL torque	1,83
DOL Pull out torque vs FL torque	3,28
Star-Delta Starting torque vs FL torque	0,82
Star-Delta Pull up torque vs FL torque	0,57
Star-Delta Pull out torque vs FL torque	1,02
DOL Starting current vs FL current	7,54
Star-Delta Starting current vs FL current	2,35
Rotor Inertia [J]	0,052 kgm²

Bearing DE	6309 2Z C3
Bearing NDE	6309 2Z C3

WI	Change	date	sign
Dutchi Motors B.V.		Description	date
P.O. Box 5390		generated	10-jun-10
NL-6802EJ Arnhem			
tel: +31-(0)26 - 3541 600		dutchi.motors@dutchi.nl	
fax: +31-(0)26 - 3541 650		www.dutchi.com	

Power is our commodity, the world is our market !



Specification	IEC60034-1
Manufacturer	Dutchi Motors BV
Motor type	DM1-IE2-160MX2
Rated power	15 kW S1 Duty
Speed	2920 r.p.m.
Voltage	400 / 690 V
Frequency	50 Hz
Connection	Δ / Y
Amps full load	26,5 / 15,3 A
Amps no load	7,7 A
Enclosure	IP55
Insulation class	F (temp. rise B (80 K))

Max coolant temp.	40 °C
Max altitude	1000 m above sea level
Comment	3 x PTC150 °C

Feature	Cast-iron motor
Weight	117 kg

Warranty **12~18 months**

Efficiency class	IE2			
Load data	100%	75%	50%	25%
Efficiency	90,3	91,1	90,9	87,2 %
Power factor	0,9	0,87	0,82	0,68

Sound pressure level(1m)	73,4 dB(A)
Resistance R20(open)	0,573 Ω
Resistance R20	Δ 0,382 Ω

Full load torque	49 Nm
DOL Starting torque vs FL torque	2,64
DOL Pull up torque vs FL torque	1,83
DOL Pull out torque vs FL torque	3,28
Star-Delta Starting torque vs FL torque	0,82
Star-Delta Pull up torque vs FL torque	0,57
Star-Delta Pull out torque vs FL torque	1,02
DOL Starting current vs FL current	7,54
Star-Delta Starting current vs FL current	2,35
Rotor Inertia [J]	0,052 kgm²

Bearing DE	6309 2Z C3
Bearing NDE	6309 2Z C3

WI	Change	date	sign
Dutchi Motors B.V.		Description	date
P.O. Box 5390		generated	10-jun-10
NL-6802EJ Arnhem			
tel: +31-(0)26 - 3541 600		dutchi.motors@dutchi.nl	
fax: +31-(0)26 - 3541 650		www.dutchi.com	