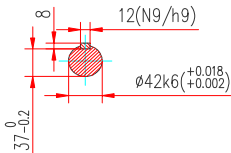
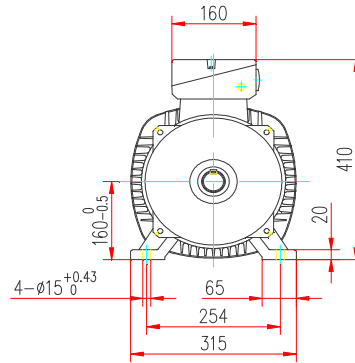
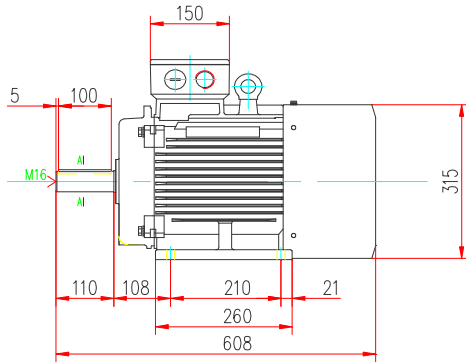


Power is our commodity, the world is our market !



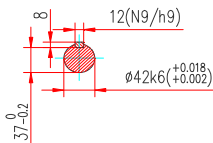
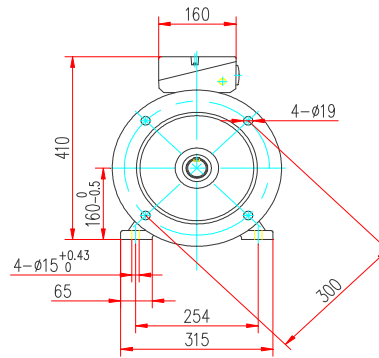
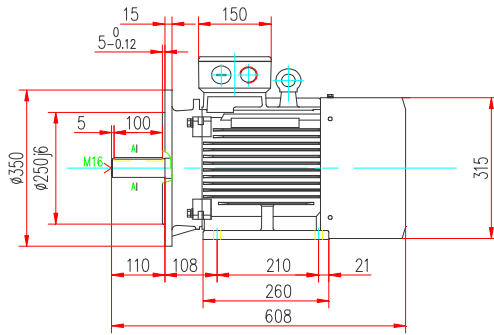
Specification	IEC60034-1
Manufacturer	Dutchi Motors BV
Motor type	DM1-IE2-160M6
Rated power	7,5 kW S1 Duty
Speed	970 r.p.m.
Voltage	400 / 690 V
Frequency	50 Hz
Connection	Δ / Y
Amps full load	15,8 / 9,17 A
Amps no load	9 A
Enclosure	IP55
Insulation class	F (temp. rise B (80 K))
Max coolant temp.	40 °C
Max altitude	1000 m above sea level
Comment	3 x PTC150 °C
Feature	Cast-iron motor
Weight	108 kg
Warranty	12-18 months

Efficiency class	IE2			
Load data	100%	75%	50%	25%
Efficiency	87,4	87,1	85	77,2 %
Power factor	0,77	0,7	0,58	0,38
Sound pressure level(1m)	63,5 dB(A)			
Resistance R20(open)	1141 Ω			
Resistance R20	Δ 0,76 Ω			
Full load torque	71,9 Nm			
DOL Starting torque vs FL torque	2,25			
DOL Pull up torque vs FL torque	1,81			
DOL Pull out torque vs FL torque	4,1			
Star-Delta Starting torque vs FL torque	0,7			
Star-Delta Pull up torque vs FL torque	0,56			
Star-Delta Pull out torque vs FL torque	1,28			
DOL Starting current vs FL current	7,74			
Star-Delta Starting current vs FL current	2,41			
Rotor Inertia [J]	0,113 kgm²			
Bearing DE	6309 2Z C3			
Bearing NDE	6309 2Z C3			

WI	Change	date	sign
Dutchi Motors B.V. P.O. Box 5390 NL-6802EJ Arnhem tel: +31-(0)26 - 3541 600 fax: +31-(0)26 - 3541 650	Description	date	sign
	generated	31-mrt-10	
dutchi.motors@dutchi.nl www.dutchi.com			



Power is our commodity, the world is our market !

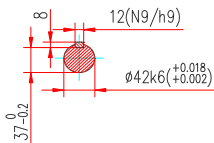
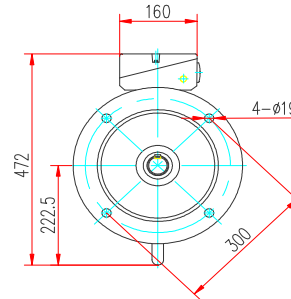
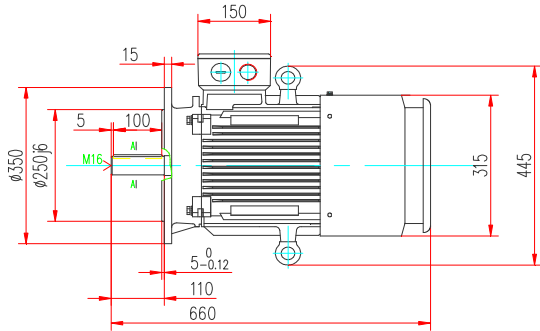


Specification	IEC60034-1
Manufacturer	Dutchi Motors BV
Motor type	DM1-IE2-160M6
Rated power	7,5 kW S1 Duty
Speed	970 r.p.m.
Voltage	400 / 690 V
Frequency	50 Hz
Connection	Δ / Y
Amps full load	15,8 / 9,17 A
Amps no load	9 A
Enclosure	IP55
Insulation class	F (temp. rise B (80 K))
Max coolant temp.	40 °C
Max altitude	1000 m above sea level
Comment	3 x PTC150 °C
Feature	Cast-iron motor
Weight	108 kg
Warranty	12-18 months

Efficiency class	IE2			
Load data	100%	75%	50%	25%
Efficiency	87,4	87,1	85	77,2 %
Power factor	0,77	0,7	0,58	0,38
Sound pressure level(1m)	63,5 dB(A)			
Resistance R20(open)	1141 Ω			
Resistance R20	Δ 0,76 Ω			
Full load torque	71,9 Nm			
DOL Starting torque vs FL torque	2,25			
DOL Pull up torque vs FL torque	1,81			
DOL Pull out torque vs FL torque	4,1			
Star-Delta Starting torque vs FL torque	0,7			
Star-Delta Pull up torque vs FL torque	0,56			
Star-Delta Pull out torque vs FL torque	1,28			
DOL Starting current vs FL current	7,74			
Star-Delta Starting current vs FL current	2,41			
Rotor Inertia [J]	0,113 kgm²			
Bearing DE	6309 2Z C3			
Bearing NDE	6309 2Z C3			

WI	Change	date	sign
Dutchi Motors B.V.		Description	date
P.O. Box 5390		generated	10-jun-10
NL-6802EJ Arnhem			
tel: +31-(0)26 - 3541 600		dutchi.motors@dutchi.nl	
fax: +31-(0)26 - 3541 650		www.dutchi.com	

Power is our commodity, the world is our market !



Specification	IEC60034-1
Manufacturer	Dutchi Motors BV
Motor type	DM1-IE2-160M6
Rated power	7,5 kW S1 Duty
Speed	970 r.p.m.
Voltage	400 / 690 V
Frequency	50 Hz
Connection	Δ / Y
Amps full load	15,8 / 9,17 A
Amps no load	9 A
Enclosure	IP55
Insulation class	F (temp. rise B (80 K))

Max coolant temp.	40 °C
Max altitude	1000 m above sea level
Comment	3 x PTC150 °C

Feature	Cast-iron motor
Weight	108 kg

Warranty	12~18 months
----------	---------------------

Efficiency class	IE2			
Load data	100%	75%	50%	25%
Efficiency	87,4	87,1	85	77,2 %
Power factor	0,77	0,7	0,58	0,38

Sound pressure level(1m)	63,5 dB(A)
Resistance R20(open)	1141 Ω
Resistance R20	Δ 0,76 Ω

Full load torque	71,9 Nm
DOL Starting torque vs FL torque	2,25
DOL Pull up torque vs FL torque	1,81
DOL Pull out torque vs FL torque	4,1
Star-Delta Starting torque vs FL torque	0,7
Star-Delta Pull up torque vs FL torque	0,56
Star-Delta Pull out torque vs FL torque	1,28
DOL Starting current vs FL current	7,74
Star-Delta Starting current vs FL current	2,41
Rotor Inertia [J]	0,113 kgm²

Bearing DE	6309 2Z C3
Bearing NDE	6309 2Z C3

WI	Change	date	sign
Dutchi Motors B.V.		Description	date
P.O. Box 5390		generated	10-jun-10
NL-6802EJ Arnhem			
tel: +31-(0)26 - 3541 600			
fax: +31-(0)26 - 3541 650			
		dutchi.motors@dutchi.nl	
		www.dutchi.com	