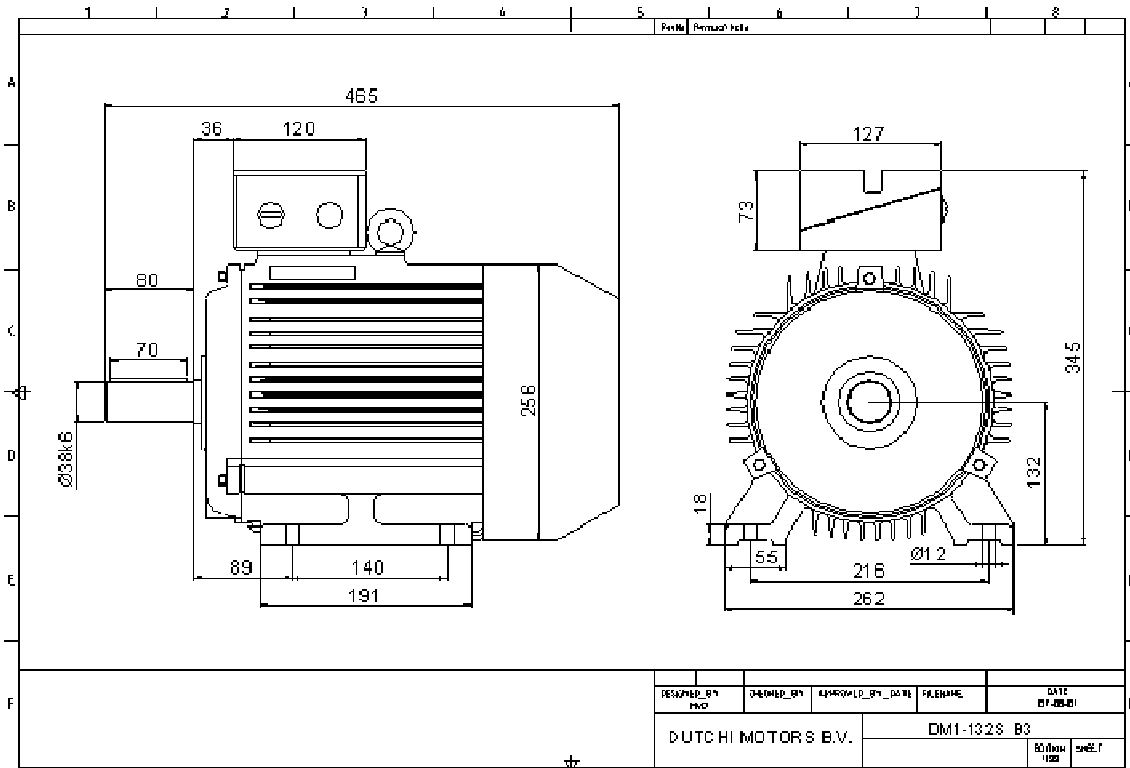


Power is our commodity, the world is our market !



Specification **IEC60034-1**  
 Manufacturer **Dutchi Motors BV**  
 Motor type **DM1-IE2-132SX2**  
 Rated power **7,5 kW S1** Duty  
 Speed **2890 r.p.m.**  
 Voltage **400 / 690 V**  
 Frequency **50 Hz**  
 Connection **Δ / Y**  
 Amps full load **13,5 / 7,84 A**  
 Amps no load **4,19 A**  
 Enclosure **IP55**  
 Insulation class **F (temp. rise B (80 K))**

Max coolant temp. **40 °C**  
 Max altitude **1000 m above sea level**  
 Comment **3 x PTC150 °C**

Feature **Cast-iron motor**  
 Weight **62 kg**

Warranty **12-18 months**

Efficiency class **IE2**  
 Load data 100% 75% 50% 25%  
 Efficiency **88,1 89,1 88,9 84,6 %**  
 Power factor **0,9 0,87 0,82 0,69**

Sound pressure level(1m) **67 dB(A)**  
 Resistance R20(open) **1568 Ω**  
 Resistance R20 **Δ 1045 Ω**

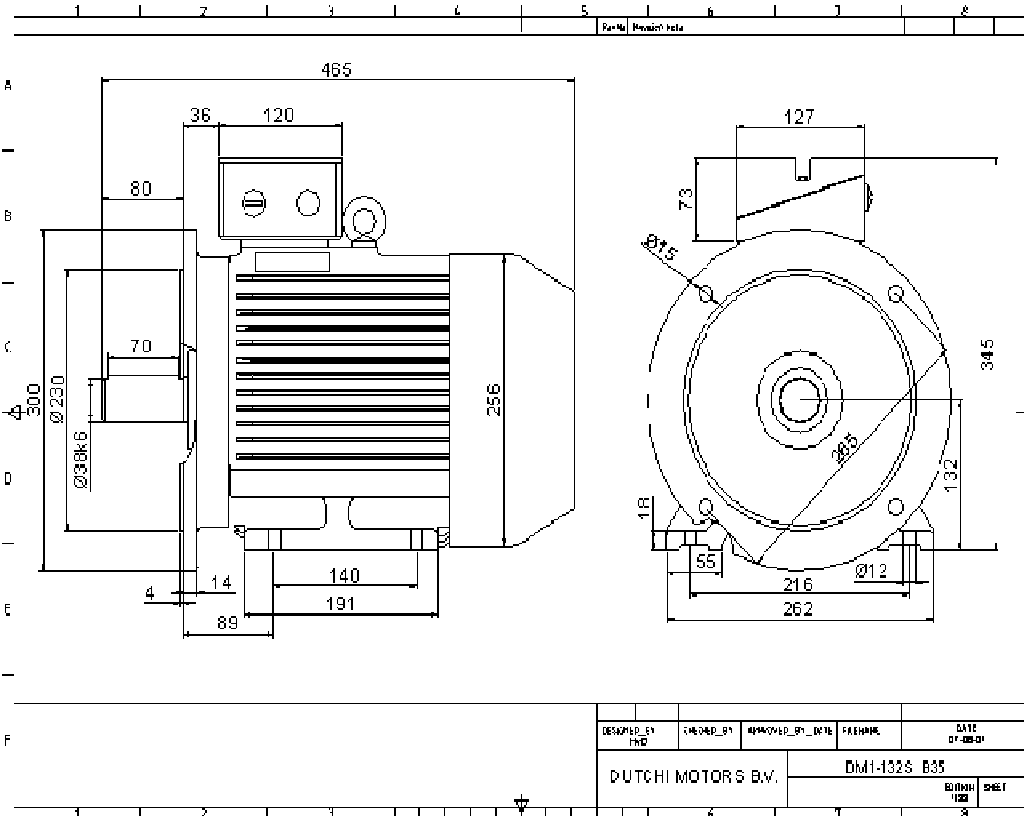
Full load torque **24,8 Nm**  
 DOL Starting torque vs FL torque **2,29**  
 DOL Pull up torque vs FL torque **1,76**  
 DOL Pull out torque vs FL torque **3,69**  
 Star-Delta Starting torque vs FL torque **0,71**  
 Star-Delta Pull up torque vs FL torque **0,55**  
 Star-Delta Pull out torque vs FL torque **1,15**  
 DOL Starting current vs FL current **7,88**  
 Star-Delta Starting current vs FL current **2,46**  
 Rotor Inertia [J] **0,013 kgm<sup>2</sup>**

Bearing DE **6308 2RZ**  
 Bearing NDE **6308 2RZ**


WI	Change	date	sign	
Dutchi Motors B.V. P.O. Box 5390 NL-6802EJ Arnhem tel: +31-(0)26 - 3541 600 fax: +31-(0)26 - 3541 650		Description generated	date 31-mrt-10	sign
		dutchi.motors@dutchi.nl www.dutchi.com		



Power is our commodity, the world is our market !



Manufacturer **Dutchi Motors BV**  
 Motor type **DM1-IE2-132SX2**  
 Rated power **7,5 kW S1** Duty  
 Speed **2890** r.p.m.  
 Voltage **400 / 690** V  
 Frequency **50** Hz  
 Connection **Δ / Y**  
 Amps full load **13,5 / 7,84** A  
 Amps no load **4,19** A  
 Enclosure **IP55**  
 Insulation class **F (temp. rise B (80 K))**

Max coolant temp. **40** °C  
 Max altitude **1000** m above sea level  
 Comment **3 x PTC150 °C**

Feature **Cast-iron motor**  
 Weight **62** kg

Warranty **12-18 months**

Load data	100%	75%	50%	25%	
Efficiency	<b>88,1</b>	<b>89,1</b>	<b>88,9</b>	<b>84,6</b>	%
Power factor	<b>0,9</b>	<b>0,87</b>	<b>0,82</b>	<b>0,69</b>	

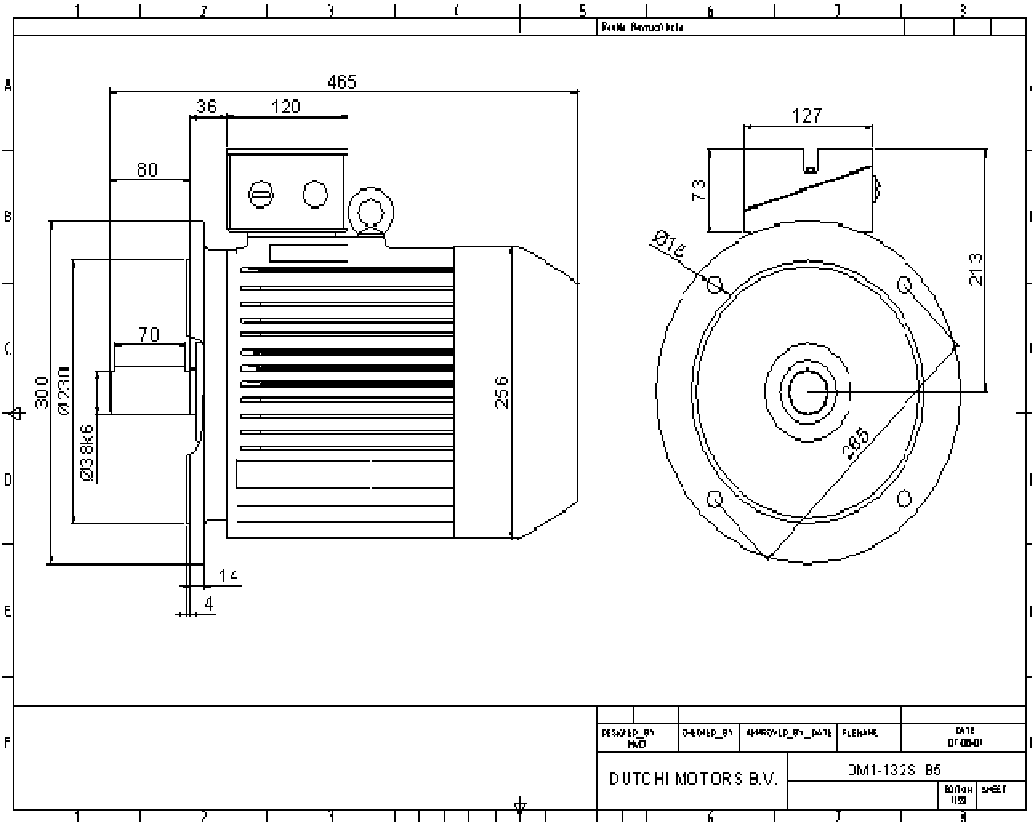
Sound pressure level(1m) **67** dB(A)  
 Resistance R20(open) **1568** Ω  
 Resistance R20 **1045** Ω

Full load torque **24,8** Nm  
 DOL Starting torque vs FL torque **2,29**  
 DOL Pull up torque vs FL torque **1,76**  
 DOL Pull out torque vs FL torque **3,69**  
 Star-Delta Starting torque vs FL torque **0,71**  
 Star-Delta Pull up torque vs FL torque **0,55**  
 Star-Delta Pull out torque vs FL torque **1,15**  
 DOL Starting current vs FL current **7,88**  
 Star-Delta Starting current vs FL current **2,46**  
 Rotor Inertia [J] **0,013** kgm²

Bearing DE **6308 2RZ**  
 Bearing NDE **6308 2RZ**


WI	Change	date	sign
Dutchi Motors B.V. P.O. Box 5390 NL-6802EJ Arnhem tel: +31-(0)26 - 3541 600 fax: +31-(0)26 - 3541 650		Description generated	date 10-jun-10
		dutchi.motors@dutchi.nl www.dutchi.com	

Power is our commodity, the world is our market !



DESIGNER_BY MUC	DRAWER_BY	APPROVED_BY_DATE	FILENAME	DATE 07-08-10
DUTCHI MOTORS B.V.		DM1-132S B5		

Manufacturer **Dutchi Motors BV**  
 Motor type **DM1-IE2-132SX2**  
 Rated power **7,5 kW S1** Duty  
 Speed **2890 r.p.m.**  
 Voltage **400 / 690 V**  
 Frequency **50 Hz**  
 Connection **Δ / Y**  
 Amps full load **13,5 / 7,84 A**  
 Amps no load **4,19 A**  
 Enclosure **IP55**  
 Insulation class **F (temp. rise B (80 K))**

Max coolant temp. **40 °C**  
 Max altitude **1000 m above sea level**  
 Comment **3 x PTC150 °C**

Feature **Cast-iron motor**  
 Weight **62 kg**

Warranty **12-18 months**

Load data	100%	75%	50%	25%	
Efficiency	<b>88,1</b>	<b>89,1</b>	<b>88,9</b>	<b>84,6</b>	%
Power factor	<b>0,9</b>	<b>0,87</b>	<b>0,82</b>	<b>0,69</b>	

Sound pressure level(1m)	<b>67</b> dB(A)
Resistance R20(open)	<b>1568</b> Ω
Resistance R20	<b>1045</b> Ω

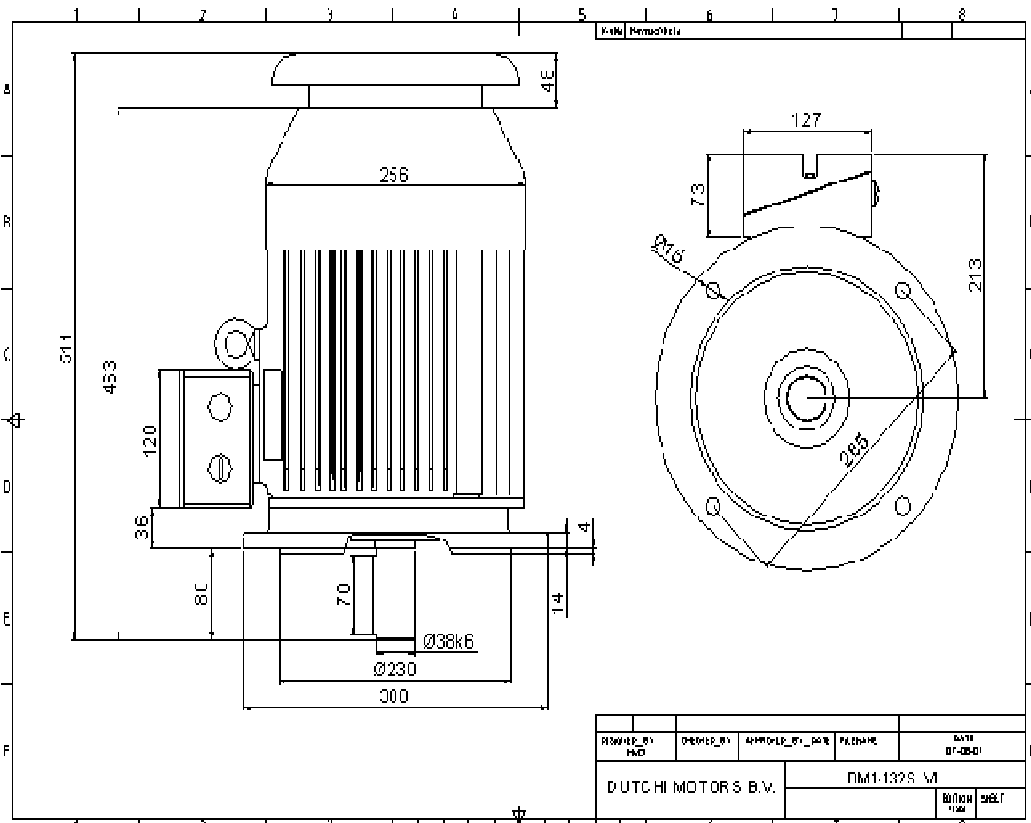
Full load torque	<b>24,8</b> Nm
DOL Starting torque vs FL torque	<b>2,29</b>
DOL Pull up torque vs FL torque	<b>1,76</b>
DOL Pull out torque vs FL torque	<b>3,69</b>
Star-Delta Starting torque vs FL torque	<b>0,71</b>
Star-Delta Pull up torque vs FL torque	<b>0,55</b>
Star-Delta Pull out torque vs FL torque	<b>1,15</b>
DOL Starting current vs FL current	<b>7,88</b>
Star-Delta Starting current vs FL current	<b>2,46</b>
Rotor Inertia [J]	<b>0,013</b> kgm <sup>2</sup>

Bearing DE **6308 2RZ**  
 Bearing NDE **6308 2RZ**


WI	Change	date	sign
Dutchi Motors B.V.		Description	date
P.O. Box 5390		generated	10-jun-10
NL-6802EJ Arnhem			
tel: +31-(0)26 - 3541 600		dutchi.motors@dutchi.nl	
fax: +31-(0)26 - 3541 650		www.dutchi.com	



Power is our commodity, the world is our market !



Manufacturer **Dutchi Motors BV**  
 Motor type **DM1-IE2-132SX2**  
 Rated power **7,5 kW S1** Duty  
 Speed **2890 r.p.m.**  
 Voltage **400 / 690 V**  
 Frequency **50 Hz**  
 Connection **Δ / Y**  
 Amps full load **13,5 / 7,84 A**  
 Amps no load **4,19 A**  
 Enclosure **IP55**  
 Insulation class **F (temp. rise B (80 K))**

Max coolant temp. **40 °C**  
 Max altitude **1000 m above sea level**  
 Comment **3 x PTC150 °C**

Feature **Cast-iron motor**  
 Weight **62 kg**

Warranty **12-18 months**

Load data	100%	75%	50%	25%	
Efficiency	<b>88,1</b>	<b>89,1</b>	<b>88,9</b>	<b>84,6</b>	%
Power factor	<b>0,9</b>	<b>0,87</b>	<b>0,82</b>	<b>0,69</b>	

Sound pressure level(1m)	<b>67 dB(A)</b>
Resistance R20(open)	<b>1568 Ω</b>
Resistance R20	<b>1045 Ω</b>

Full load torque	<b>24,8 Nm</b>
DOL Starting torque vs FL torque	<b>2,29</b>
DOL Pull up torque vs FL torque	<b>1,76</b>
DOL Pull out torque vs FL torque	<b>3,69</b>
Star-Delta Starting torque vs FL torque	<b>0,71</b>
Star-Delta Pull up torque vs FL torque	<b>0,55</b>
Star-Delta Pull out torque vs FL torque	<b>1,15</b>
DOL Starting current vs FL current	<b>7,88</b>
Star-Delta Starting current vs FL current	<b>2,46</b>
Rotor Inertia [J]	<b>0,013 kgm²</b>

Bearing DE **6308 2RZ**  
 Bearing NDE **6308 2RZ**


WI	Change	date	sign
Dutchi Motors B.V. P.O. Box 5390 NL-6802EJ Arnhem tel: +31-(0)26 - 3541 600 fax: +31-(0)26 - 3541 650		Description generated	date 10-jun-10
		dutchi.motors@dutchi.nl www.dutchi.com	