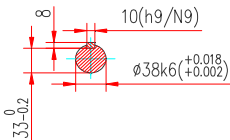
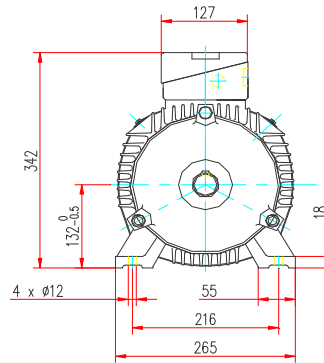
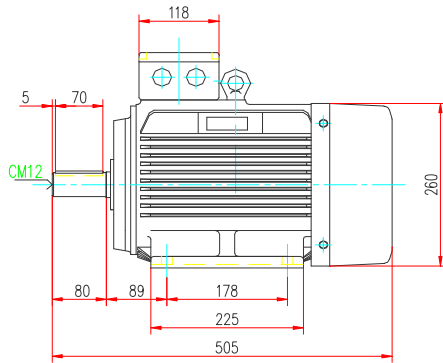


Power is our commodity, the world is our market !



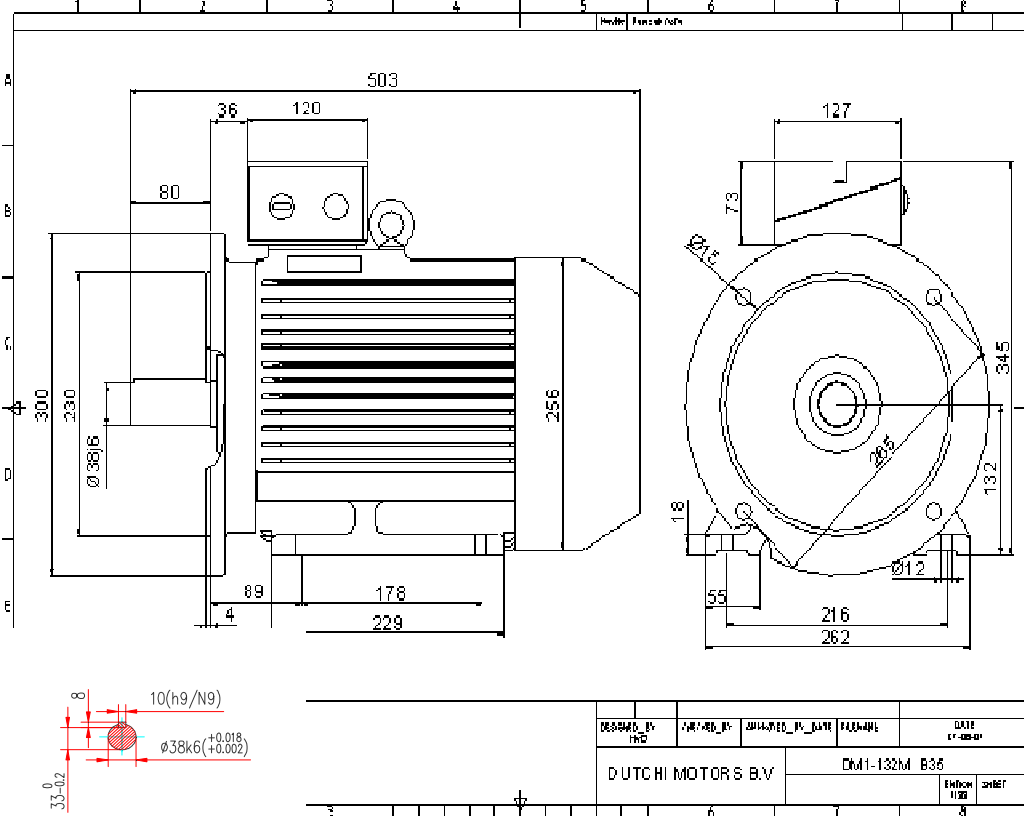
Specification	IEC 60034-1
Manufacturer	Dutchi Motors BV
Motor type	DM1-IE2-132MX6
Rated power	5,5 kW S1 Duty
Speed	965 r.p.m.
Voltage	400 / 690 V
Frequency	50 Hz
Connection	Δ / Y
Amps full load	11,5 / 6,65 A
Amps no load	6,04 A
Enclosure	IP55
Insulation class	F (temp. rise B (80 K))
Max coolant temp.	40 °C
Max altitude	1000 m above sea level
Comment	3 x PTC150 °C
Feature	Cast-iron motor
Weight	75 kg
Warranty	12-18 months

Efficiency class	IE2			
Load data	100%	75%	50%	25%
Efficiency	86,1	86,5	85	77,6 %
Power factor	0,79	0,73	0,61	0,39
Sound pressure level(1m)	56,3 dB(A)			
Resistance R20(open)	2185 Ω			
Resistance R20				Δ 1456 Ω
Full load torque	54,3 Nm			
DOL Starting torque vs FL torque	2,3			
DOL Pull up torque vs FL torque	1,74			
DOL Pull out torque vs FL torque	3,58			
Star-Delta Starting torque vs FL torque	0,72			
Star-Delta Pull up torque vs FL torque	0,54			
Star-Delta Pull out torque vs FL torque	1,12			
DOL Starting current vs FL current	7,35			
Star-Delta Starting current vs FL current	2,29			
Rotor Inertia [J]	0,057 kgm²			
Bearing DE	6308 2RZ			
Bearing NDE	6308 2RZ			

WI	Change	date	sign
Dutchi Motors B.V. P.O. Box 5390 NL-6802EJ Arnhem tel: +31-(0)26 - 3541 600 fax: +31-(0)26 - 3541 650		Description	date
		generated	31-mrt-10
		dutchi.motors@dutchi.nl www.dutchi.com	

the world is our market !

CLASS



Specification **IEC60034-1**
 Manufacturer **Dutchi Motors BV**
 Motor type **DM1-IE2-132MX6**
 Rated power **5,5 kW S1** Duty
 Speed **965** r.p.m.
 Voltage **400 / 690** V
 Frequency **50** Hz
 Connection **Δ / Y**
 Amps full load **11,5 / 6,65** A
 Amps no load **6,04** A
 Enclosure **IP55**
 Insulation class **F (temp. rise B (80 K))**

Max coolant temp. **40** °C
 Max altitude **1000** m above sea level
 Comment **3 x PTC150 °C**

Feature **Cast-iron motor**
 Weight **75** kg

Warranty **12-18 months**

Efficiency class	IE2			
Load data	100%	75%	50%	25%
Efficiency	86,1	86,5	85	77,6 %
Power factor	0,79	0,73	0,61	0,39

Sound pressure level(1m)	56,3 dB(A)
Resistance R20(open)	2185 Ω
Resistance R20	Δ 1456 Ω

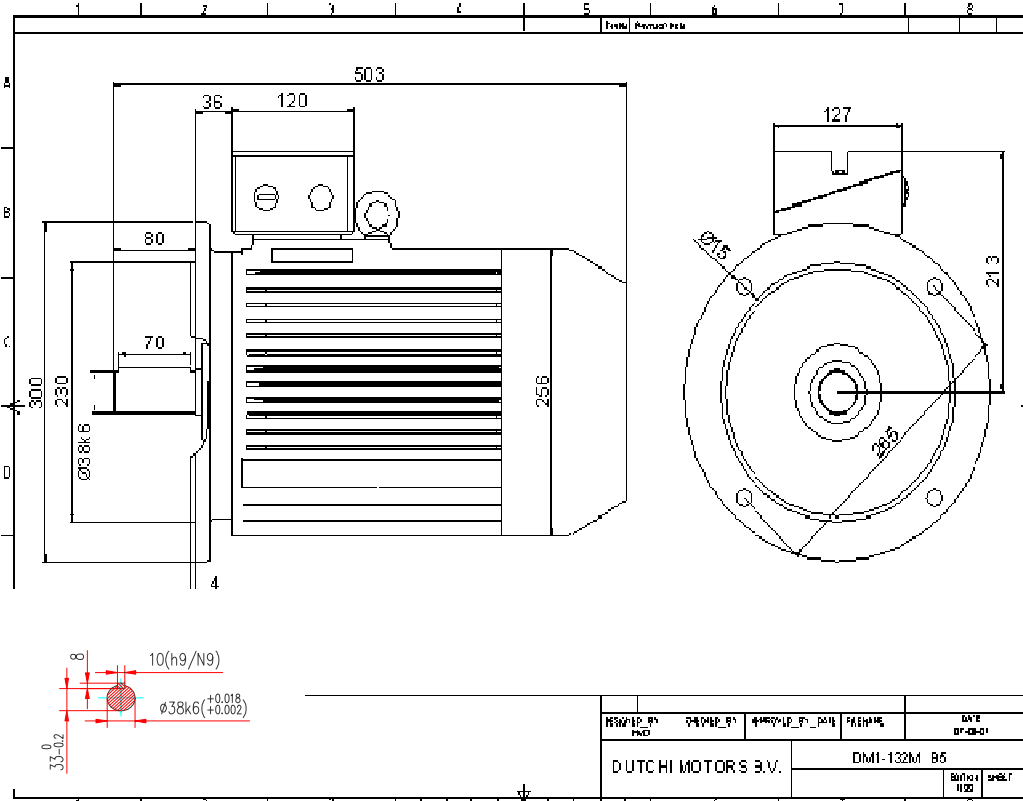
Full load torque	54,3 Nm
DOL Starting torque vs FL torque	2,3
DOL Pull up torque vs FL torque	1,74
DOL Pull out torque vs FL torque	3,58
Star-Delta Starting torque vs FL torque	0,72
Star-Delta Pull up torque vs FL torque	0,54
Star-Delta Pull out torque vs FL torque	1,12
DOL Starting current vs FL current	7,35
Star-Delta Starting current vs FL current	2,29
Rotor Inertia [J]	0,057 kgm²

Bearing DE **6308 2RZ**
 Bearing NDE **6308 2RZ**

WI	Change	date	sign
Dutchi Motors B.V. P.O. Box 5390 NL-6802EJ Arnhem tel: +31-(0)26 - 3541 600 fax: +31-(0)26 - 3541 650		Description generated	date 10-jun-10
		dutchi.motors@dutchi.nl www.dutchi.com	



Power is our commodity, the world is our market !



DUTCHI MOTORS B.V.		DM1-132M B5	
DATE	07-08-10	REVIZIE	

Manufacturer	Dutchi Motors BV
Motor type	DM1-IE2-132MX6
Rated power	5,5 kW S1 Duty
Speed	965 r.p.m.
Voltage	400 / 690 V
Frequency	50 Hz
Connection	Δ / Y
Amps full load	11,5 / 6,65 A
Amps no load	6,04 A
Enclosure	IP55
Insulation class	F (temp. rise B (80 K))

Max coolant temp.	40 °C
Max altitude	1000 m above sea level
Comment	3 x PTC150 °C

Feature	Cast-iron motor
Weight	75 kg

Warranty **12-18 months**

Load data	100%	75%	50%	25%	
Efficiency	86,1	86,5	85	77,6	%
Power factor	0,79	0,73	0,61	0,39	

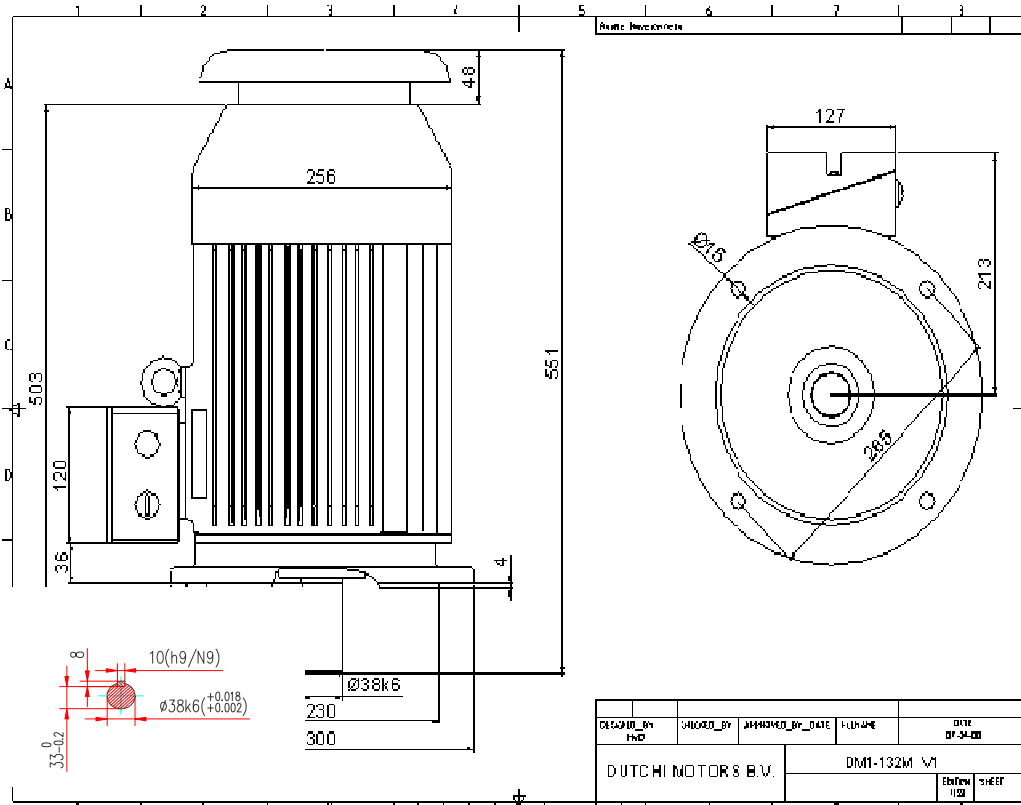
Sound pressure level(1m)	56,3 dB(A)
Resistance R20(open)	2185 Ω
Resistance R20	Δ 1456 Ω

Full load torque	54,3 Nm
DOL Starting torque vs FL torque	2,3
DOL Pull up torque vs FL torque	1,74
DOL Pull out torque vs FL torque	3,58
Star-Delta Starting torque vs FL torque	0,72
Star-Delta Pull up torque vs FL torque	0,54
Star-Delta Pull out torque vs FL torque	1,12
DOL Starting current vs FL current	7,35
Star-Delta Starting current vs FL current	2,29
Rotor Inertia [J]	0,057 kgm²

Bearing DE	6308 2RZ
Bearing NDE	6308 2RZ

WI	Change	date	sign
Dutchi Motors B.V. P.O. Box 5390 NL-6802EJ Arnhem tel: +31-(0)26 - 3541 600 fax: +31-(0)26 - 3541 650		Description generated	date 10-jun-10
		dutchi.motors@dutchi.nl www.dutchi.com	

Power is our commodity, the world is our market !



Manufacturer Dutchi Motors BV
Motor type DM1-IE2-132MX6
Rated power 5,5 kW S1 Duty
Speed 965 r.p.m.
Voltage 400 / 690 V
Frequency 50 Hz
Connection Δ / Y
Amps full load 11,5 / 6,65 A
Amps no load 6,04 A
Enclosure IP55
Insulation class F (temp. rise B (80 K))

Max coolant temp. 40 °C
Max altitude 1000 m above sea level
Comment 3 x PTC150 °C

Feature Cast-iron motor
Weight 75 kg

Warranty 12-18 months

Load data	100%	75%	50%	25%	
Efficiency	86,1	86,5	85	77,6	%
Power factor	0,79	0,73	0,61	0,39	

Sound pressure level(1m) 56,3 dB(A)
Resistance R20(open) 2185 Ω
Resistance R20 Δ 1456 Ω

Full load torque 54,3 Nm
DOL Starting torque vs FL torque 2,3
DOL Pull up torque vs FL torque 1,74
DOL Pull out torque vs FL torque 3,58
Star-Delta Starting torque vs FL torque 0,72
Star-Delta Pull up torque vs FL torque 0,54
Star-Delta Pull out torque vs FL torque 1,12
DOL Starting current vs FL current 7,35
Star-Delta Starting current vs FL current 2,29
Rotor Inertia [J] 0,057 kgm²

Bearing DE 6308 2RZ
Bearing NDE 6308 2RZ

WI	Change	date	sign
Dutchi Motors B.V.		Description	date
P.O. Box 5390		generated	10-jun-10
NL-6802EJ Arnhem			
tel: +31-(0)26 - 3541 600		dutchi.motors@dutchi.nl	
fax: +31-(0)26 - 3541 650		www.dutchi.com	