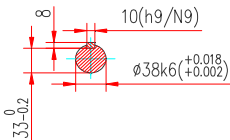
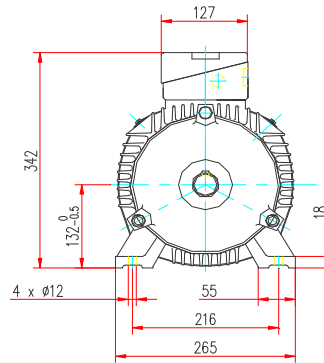
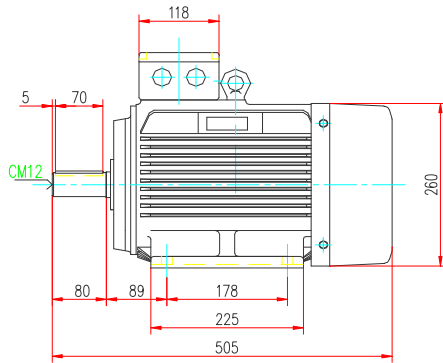


Power is our commodity, the world is our market !



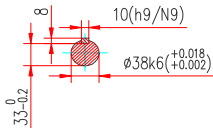
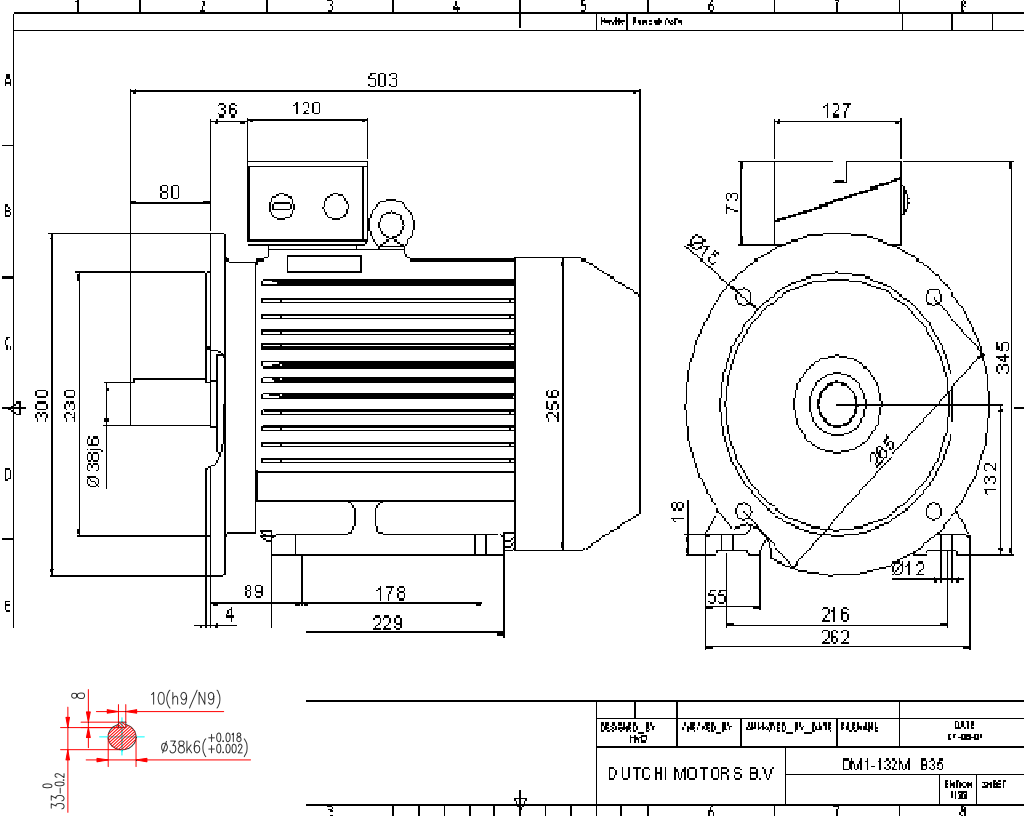
Specification	<b>IEC60034-1</b>
Manufacturer	<b>Dutchi Motors BV</b>
Motor type	<b>DM1-IE2-132M6</b>
Rated power	<b>4 kW S1</b> Duty
Speed	<b>965 r.p.m.</b>
Voltage	<b>400 / 690 V</b>
Frequency	<b>50 Hz</b>
Connection	<b>Δ / Y</b>
Amps full load	<b>8,65 / 4,99 A</b>
Amps no load	<b>4,71 A</b>
Enclosure	<b>IP55</b>
Insulation class	<b>F (temp. rise B (80 K))</b>
Max coolant temp.	<b>40 °C</b>
Max altitude	<b>1000 m above sea level</b>
Comment	<b>3 x PTC150 °C</b>
Feature	<b>Cast-iron motor</b>
Weight	<b>71 kg</b>
Warranty	<b>12-18 months</b>

Efficiency class	<b>IE2</b>			
Load data	100%	75%	50%	25%
Efficiency	<b>84,8</b>	<b>85</b>	<b>83,1</b>	<b>75</b> %
Power factor	<b>0,78</b>	<b>0,7</b>	<b>0,58</b>	<b>0,38</b>
Sound pressure level(1m)	<b>57,2 dB(A)</b>			
Resistance R20(open)	<b>2991 Ω</b>			
Resistance R20	<b>Δ 1994 Ω</b>			
Full load torque	<b>39,5 Nm</b>			
DOL Starting torque vs FL torque	<b>2,43</b>			
DOL Pull up torque vs FL torque	<b>1,83</b>			
DOL Pull out torque vs FL torque	<b>3,76</b>			
Star-Delta Starting torque vs FL torque	<b>0,76</b>			
Star-Delta Pull up torque vs FL torque	<b>0,57</b>			
Star-Delta Pull out torque vs FL torque	<b>1,17</b>			
DOL Starting current vs FL current	<b>7,6</b>			
Star-Delta Starting current vs FL current	<b>2,37</b>			
Rotor Inertia [J]	<b>0,046 kgm<sup>2</sup></b>			
Bearing DE	<b>6308 2RZ</b>			
Bearing NDE	<b>6308 2RZ</b>			


WI	Change	date	sign
Dutchi Motors B.V. P.O. Box 5390 NL-6802EJ Arnhem tel: +31-(0)26 - 3541 600 fax: +31-(0)26 - 3541 650		Description	date
		generated	31-mrt-10
		dutchi.motors@dutchi.nl www.dutchi.com	



the world is our market !



DESIGNED BY	DRAWN BY	APPROVED BY	DATE
DATE	DM1-132M B35		
DUTCHI MOTORS B.V.		EMTOK	2010

Specification **IEC60034-1**  
 Manufacturer **Dutchi Motors BV**  
 Motor type **DM1-IE2-132M6**  
 Rated power **4 kW S1** Duty  
 Speed **965 r.p.m.**  
 Voltage **400 / 690 V**  
 Frequency **50 Hz**  
 Connection **Δ / Y**  
 Amps full load **8,65 / 4,99 A**  
 Amps no load **4,71 A**  
 Enclosure **IP55**  
 Insulation class **F (temp. rise B (80 K))**

Max coolant temp. **40 °C**  
 Max altitude **1000 m above sea level**  
 Comment **3 x PTC150 °C**

Feature **Cast-iron motor**  
 Weight **71 kg**

Warranty **12-18 months**

Efficiency class	<b>IE2</b>			
Load data	100%	75%	50%	25%
Efficiency	<b>84,8</b>	<b>85</b>	<b>83,1</b>	<b>75</b> %
Power factor	<b>0,78</b>	<b>0,7</b>	<b>0,58</b>	<b>0,38</b>

Sound pressure level(1m)	<b>57,2 dB(A)</b>
Resistance R20(open)	<b>2991 Ω</b>
Resistance R20	<b>Δ 1994 Ω</b>

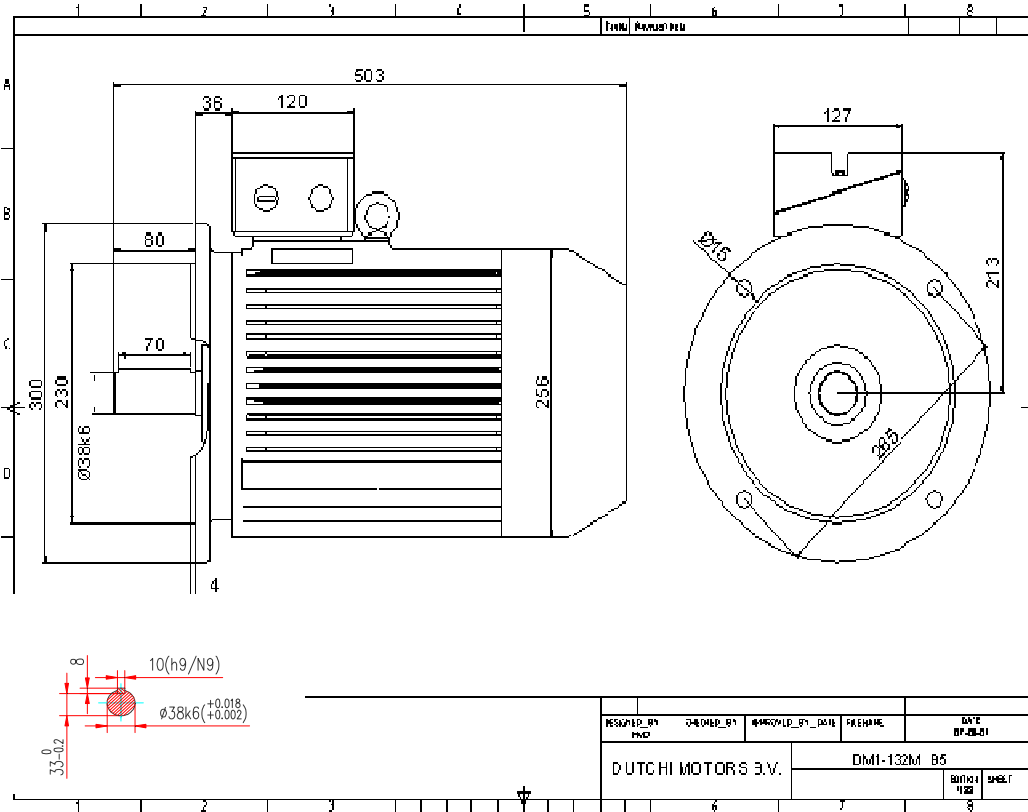
Full load torque	<b>39,5 Nm</b>
DOL Starting torque vs FL torque	<b>2,43</b>
DOL Pull up torque vs FL torque	<b>1,83</b>
DOL Pull out torque vs FL torque	<b>3,76</b>
Star-Delta Starting torque vs FL torque	<b>0,76</b>
Star-Delta Pull up torque vs FL torque	<b>0,57</b>
Star-Delta Pull out torque vs FL torque	<b>1,17</b>
DOL Starting current vs FL current	<b>7,6</b>
Star-Delta Starting current vs FL current	<b>2,37</b>
Rotor Inertia [J]	<b>0,046 kgm²</b>

Bearing DE **6308 2RZ**  
 Bearing NDE **6308 2RZ**


WI	Change	date	sign
Dutchi Motors B.V.		Description	date
P.O. Box 5390		generated	10-jun-10
NL-6802EJ Arnhem		dutchi.motors@dutchi.nl	
tel: +31-(0)26 - 3541 600		www.dutchi.com	
fax: +31-(0)26 - 3541 650			



Power is our commodity, the world is our market !



DESIGNED BY	DRAWN BY	APPROVED BY DATE	PREPARE	DATE OF REV.
DUTCHI MOTORS B.V.			DM1-132M B5	
REV. NO.	REV. DATE			

Specification  
 Manufacturer **Dutchi Motors BV**  
 Motor type **DM1-IE2-132M6**  
 Rated power **4 kW S1** Duty  
 Speed **965** r.p.m.  
 Voltage **400 / 690** V  
 Frequency **50** Hz  
 Connection **Δ / Y**  
 Amps full load **8,65 / 4,99** A  
 Amps no load **4,71** A  
 Enclosure **IP55**  
 Insulation class **F (temp. rise B (80 K))**

Max coolant temp. **40** °C  
 Max altitude **1000** m above sea level  
 Comment **3 x PTC150 °C**

Feature **Cast-iron motor**  
 Weight **71** kg

Warranty **12-18 months**

Efficiency class	<b>IE2</b>			
Load data	100%	75%	50%	25%
Efficiency	<b>84,8</b>	<b>85</b>	<b>83,1</b>	<b>75</b> %
Power factor	<b>0,78</b>	<b>0,7</b>	<b>0,58</b>	<b>0,38</b>

Sound pressure level(1m)	<b>57,2</b> dB(A)
Resistance R20(open)	<b>2991</b> Ω
Resistance R20	<b>1994</b> Ω

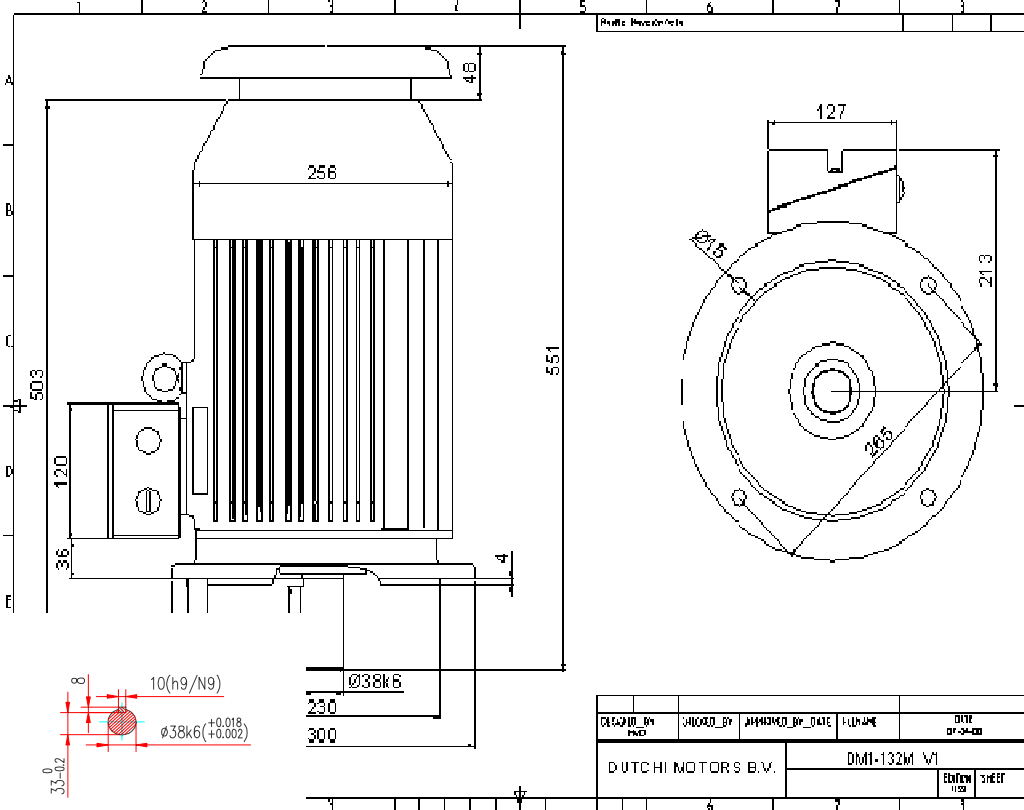
Full load torque	<b>39,5</b> Nm
DOL Starting torque vs FL torque	<b>2,43</b>
DOL Pull up torque vs FL torque	<b>1,83</b>
DOL Pull out torque vs FL torque	<b>3,76</b>
Star-Delta Starting torque vs FL torque	<b>0,76</b>
Star-Delta Pull up torque vs FL torque	<b>0,57</b>
Star-Delta Pull out torque vs FL torque	<b>1,17</b>
DOL Starting current vs FL current	<b>7,6</b>
Star-Delta Starting current vs FL current	<b>2,37</b>
Rotor Inertia [J]	<b>0,046</b> kgm <sup>2</sup>

Bearing DE **6308 2RZ**  
 Bearing NDE **6308 2RZ**


WI	Change	date	sign
Dutchi Motors B.V.		Description	date
P.O. Box 5390		generated	10-jun-10
NL-6802EJ Arnhem			
tel: +31-(0)26 - 3541 600		dutchi.motors@dutchi.nl	
fax: +31-(0)26 - 3541 650		www.dutchi.com	



**The world is our commodity, the world is our market !**



DATE_OF_DESIGN	DATE_OF_APPROVAL	APPROVED_BY	DATE	FILE
				DM1-132M V1
DUTCHI MOTORS B.V.				
		Editeur	31EET	

Specification **IEC60034-1**  
 Manufacturer **Dutchi Motors BV**  
 Motor type **DM1-IE2-132M6**  
 Rated power **4 kW S1** Duty  
 Speed **965** r.p.m.  
 Voltage **400 / 690** V  
 Frequency **50** Hz  
 Connection **Δ / Y**  
 Amps full load **8,65 / 4,99** A  
 Amps no load **4,71** A  
 Enclosure **IP55**  
 Insulation class **F (temp. rise B (80 K))**

Max coolant temp. **40** °C  
 Max altitude **1000** m above sea level  
 Comment **3 x PTC150 °C**

Feature **Cast-iron motor**  
 Weight **71** kg

Warranty **12-18 months**

Efficiency class **IE2**  
 Load data 100% 75% 50% 25%  
 Efficiency **84,8 85 83,1 75** %  
 Power factor **0,78 0,7 0,58 0,38**

Sound pressure level(1m) **57,2** dB(A)  
 Resistance R20(open) **2991** Ω  
 Resistance R20 **Δ 1994** Ω

Full load torque **39,5** Nm  
 DOL Starting torque vs FL torque **2,43**  
 DOL Pull up torque vs FL torque **1,83**  
 DOL Pull out torque vs FL torque **3,76**  
 Star-Delta Starting torque vs FL torque **0,76**  
 Star-Delta Pull up torque vs FL torque **0,57**  
 Star-Delta Pull out torque vs FL torque **1,17**  
 DOL Starting current vs FL current **7,6**  
 Star-Delta Starting current vs FL current **2,37**  
 Rotor Inertia [J] **0,046** kgm<sup>2</sup>

Bearing DE **6308 2RZ**  
 Bearing NDE **6308 2RZ**


WI	Change	date	sign
Dutchi Motors B.V. P.O. Box 5390 NL-6802EJ Arnhem tel: +31-(0)26 - 3541 600 fax: +31-(0)26 - 3541 650		Description generated	date 10-jun-10
		dutchi.motors@dutchi.nl www.dutchi.com	