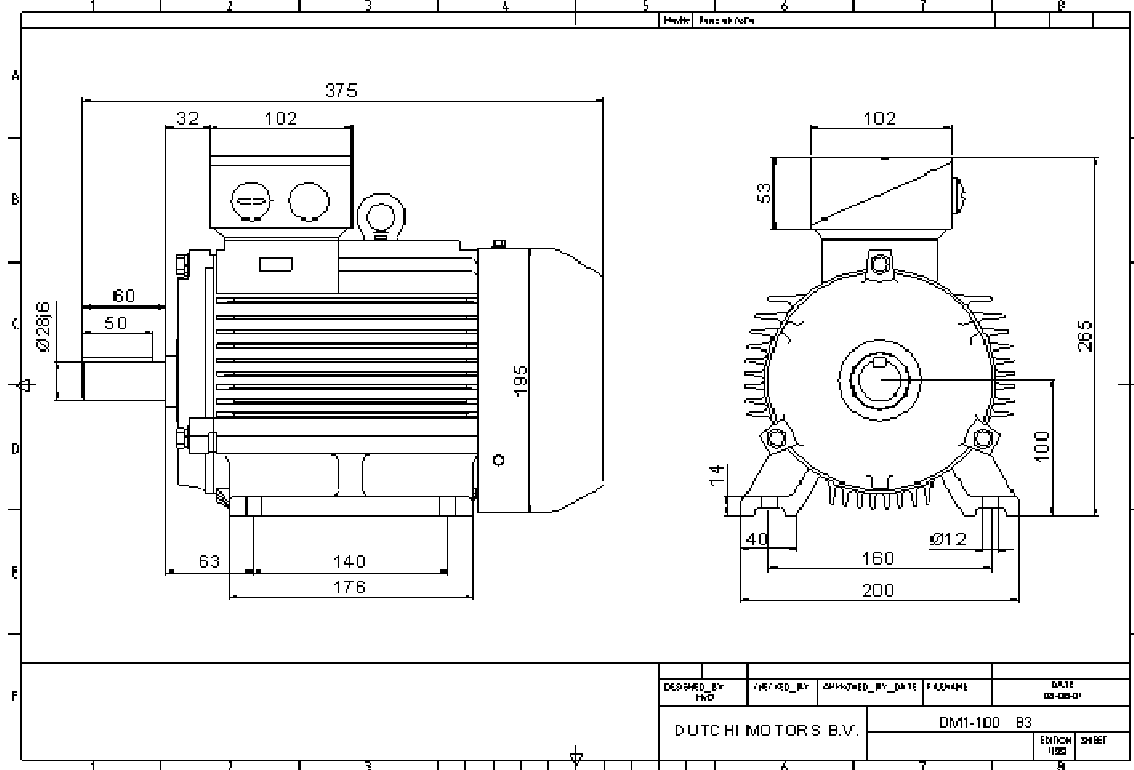




Power is our commodity, the world is our market !



Specification **IEC60034-1**  
 Manufacturer **Dutchi Motors BV**  
 Motor type **DM1-IE2-100LX4**  
 Rated power **3 kW S1** Duty  
 Speed **1435 r.p.m.**  
 Voltage **400 V**  
 Frequency **50 Hz**  
 Connection **Y**  
 Amps full load **6,23 A**  
 Amps no load **3,42 A**  
 Enclosure **IP55**  
 Insulation class **F (temp. rise B (80 K))**

Max coolant temp. **40 °C**  
 Max altitude **1000 m above sea level**  
 Comment **3 x PTC150 °C**

Feature **Cast-iron motor**  
 Weight **38 kg**

Warranty **12-18 months**

Efficiency class **IE2**  
 Load data 100% 75% 50% 25%  
 Efficiency **85,5 86,4 85,7 79,7** %  
 Power factor **0,81 0,73 0,6 0,38**

Sound pressure level(1m) **52,2 dB(A)**  
 Resistance R20(open) **1643 Ω**  
 Resistance R20 **Y 3287 Ω**

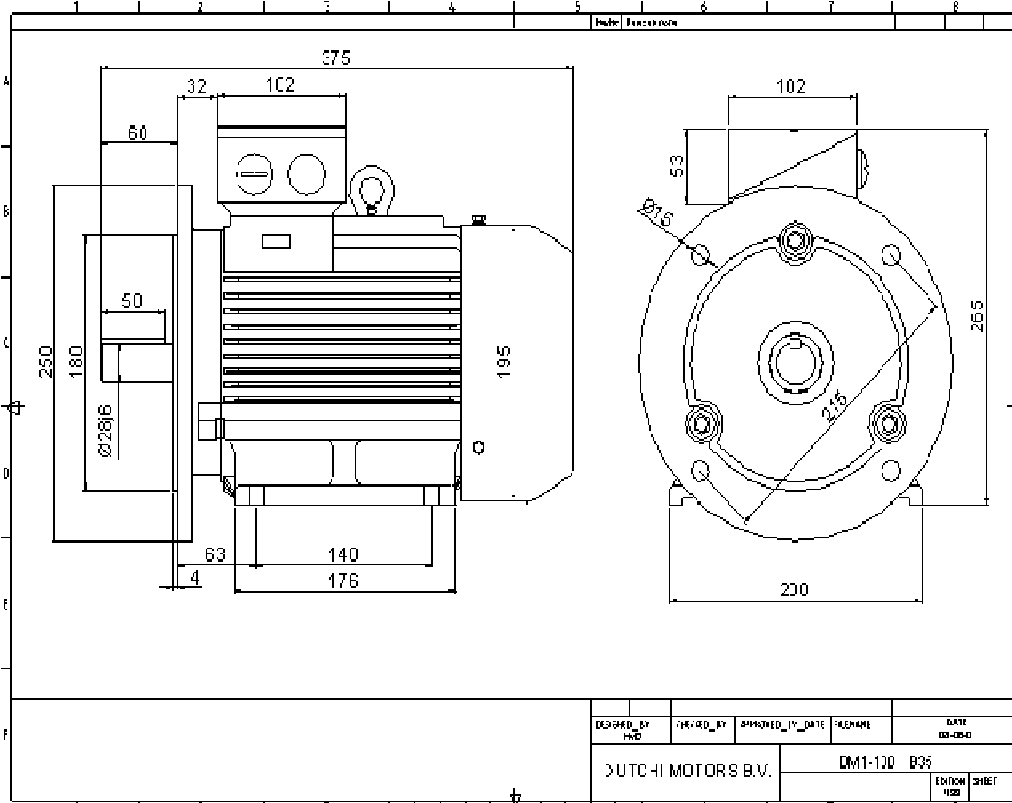
Full load torque **20 Nm**  
 DOL Starting torque vs FL torque **3,06**  
 DOL Pull up torque vs FL torque **2,07**  
 DOL Pull out torque vs FL torque **3,47**  
 Star-Delta Starting torque vs FL torque **Y-motor**  
 Star-Delta Pull up torque vs FL torque **Y-motor**  
 Star-Delta Pull out torque vs FL torque **Y-motor**  
 DOL Starting current vs FL current **7,38**  
 Star-Delta Starting current vs FL current **Y-motor**  
 Rotor Inertia [J] **0,009 kgm²**

Bearing DE **6206 2RZ**  
 Bearing NDE **6206 2RZ**


WI	Change	date	sign
Dutchi Motors B.V. P.O. Box 5390 NL-6802EJ Arnhem tel: +31-(0)26 - 3541 600 fax: +31-(0)26 - 3541 650		Description	date
		generated	31-mrt-10
		dutchi.motors@dutchi.nl www.dutchi.com	



Power is our commodity, the world is our market !



Manufacturer **Dutchi Motors BV**  
 Motor type **DM1-IE2-100LX4**  
 Rated power **3 kW S1** Duty  
 Speed **1435** r.p.m.  
 Voltage **400 V**  
 Frequency **50 Hz**  
 Connection **Y**  
 Amps full load **6,23 A**  
 Amps no load **3,42 A**  
 Enclosure **IP55**  
 Insulation class **F (temp. rise B (80 K))**

Max coolant temp. **40 °C**  
 Max altitude **1000 m** above sea level  
 Comment **3 x PTC150 °C**

Feature **Cast-iron motor**  
 Weight **38 kg**

Warranty **12-18 months**

Load data	100%	75%	50%	25%	
Efficiency	<b>85,5</b>	<b>86,4</b>	<b>85,7</b>	<b>79,7</b>	%
Power factor	<b>0,81</b>	<b>0,73</b>	<b>0,6</b>	<b>0,38</b>	

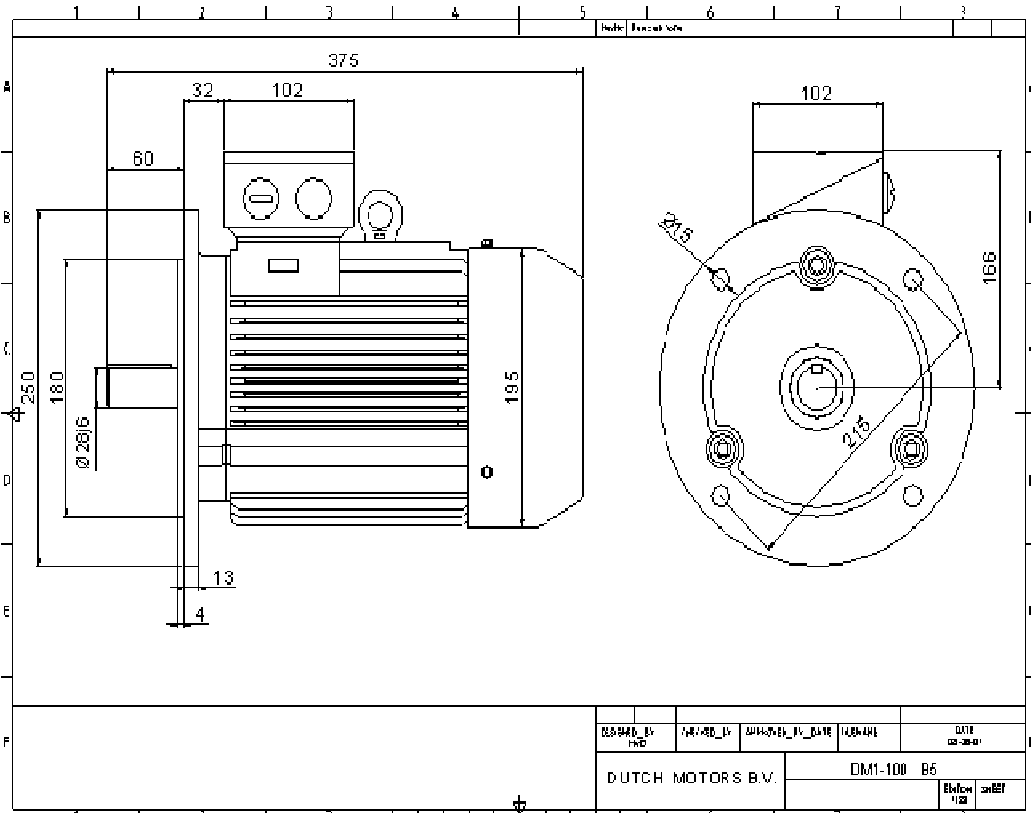
Sound pressure level(1m) **52,2** dB(A)  
 Resistance R20(open) **1643** Ω  
 Resistance R20 **Y 3287** Ω

Full load torque **20** Nm  
 DOL Starting torque vs FL torque **3,06**  
 DOL Pull up torque vs FL torque **2,07**  
 DOL Pull out torque vs FL torque **3,47**  
 Star-Delta Starting torque vs FL torque **Y-motor**  
 Star-Delta Pull up torque vs FL torque **Y-motor**  
 Star-Delta Pull out torque vs FL torque **Y-motor**  
 DOL Starting current vs FL current **7,38**  
 Star-Delta Starting current vs FL current **Y-motor**  
 Rotor Inertia [J] **0,009** kgm<sup>2</sup>

Bearing DE **6206 2RZ**  
 Bearing NDE **6206 2RZ**


WI	Change	date	sign
Dutchi Motors B.V.		Description	date
P.O. Box 5390		generated	10-jun-10
NL-6802EJ Arnhem			
tel: +31-(0)26 - 3541 600		dutchi.motors@dutchi.nl	
fax: +31-(0)26 - 3541 650		www.dutchi.com	

Power is our commodity, the world is our market !



**Manufacturer** Dutchi Motors BV  
**Motor type** DM1-IE2-100LX4  
**Rated power** 3 kW S1 Duty  
**Speed** 1435 r.p.m.  
**Voltage** 400 V  
**Frequency** 50 Hz  
**Connection** Y  
**Amps full load** 6,23 A  
**Amps no load** 3,42 A  
**Enclosure** IP55  
**Insulation class** F (temp. rise B (80 K))

**Max coolant temp.** 40 °C  
**Max altitude** 1000 m above sea level  
**Comment** 3 x PTC150 °C

**Feature** Cast-iron motor  
**Weight** 38 kg

**Warranty** 12~18 months

Load data	100%	75%	50%	25%	
Efficiency	85,5	86,4	85,7	79,7	%
Power factor	0,81	0,73	0,6	0,38	

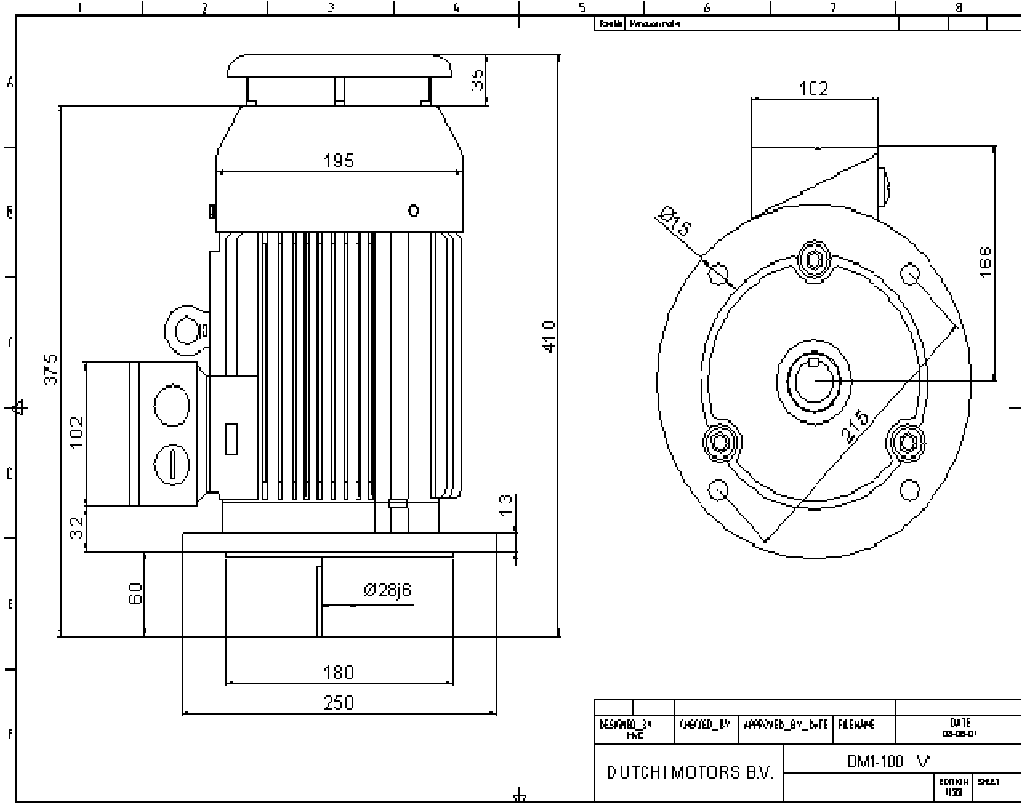
**Sound pressure level(1m)** 52,2 dB(A)  
**Resistance R20(open)** 1643 Ω  
**Resistance R20** Y 3287 Ω

**Full load torque** 20 Nm  
**DOL Starting torque vs FL torque** 3,06  
**DOL Pull up torque vs FL torque** 2,07  
**DOL Pull out torque vs FL torque** 3,47  
**Star-Delta Starting torque vs FL torque** Y-motor  
**Star-Delta Pull up torque vs FL torque** Y-motor  
**Star-Delta Pull out torque vs FL torque** Y-motor  
**DOL Starting current vs FL current** 7,38  
**Star-Delta Starting current vs FL current** Y-motor  
**Rotor Inertia [J]** 0,009 kgm<sup>2</sup>

**Bearing DE** 6206 2RZ  
**Bearing NDE** 6206 2RZ


WI	Change	date	sign
Dutchi Motors B.V. P.O. Box 5390 NL-6802EJ Arnhem tel: +31-(0)26 - 3541 600 fax: +31-(0)26 - 3541 650		Description generated	date 10-jun-10
		dutchi.motors@dutchi.nl www.dutchi.com	

Power is our commodity, the world is our market !



Manufacturer **Dutchi Motors BV**  
 Motor type **DM1-IE2-100LX4**  
 Rated power **3 kW S1** Duty  
 Speed **1435** r.p.m.  
 Voltage **400 V**  
 Frequency **50 Hz**  
 Connection **Y**  
 Amps full load **6,23 A**  
 Amps no load **3,42 A**  
 Enclosure **IP55**  
 Insulation class **F (temp. rise B (80 K))**

Max coolant temp. **40 °C**  
 Max altitude **1000 m** above sea level  
 Comment **3 x PTC150 °C**

Feature **Cast-iron motor**  
 Weight **38 kg**

Warranty **12-18 months**

Load data	100%	75%	50%	25%	
Efficiency	<b>85,5</b>	<b>86,4</b>	<b>85,7</b>	<b>79,7</b>	%
Power factor	<b>0,81</b>	<b>0,73</b>	<b>0,6</b>	<b>0,38</b>	

Sound pressure level(1m) **52,2 dB(A)**  
 Resistance R20(open) **1643 Ω**  
 Resistance R20 **Y 3287 Ω**

Full load torque **20 Nm**  
 DOL Starting torque vs FL torque **3,06**  
 DOL Pull up torque vs FL torque **2,07**  
 DOL Pull out torque vs FL torque **3,47**  
 Star-Delta Starting torque vs FL torque **Y-motor**  
 Star-Delta Pull up torque vs FL torque **Y-motor**  
 Star-Delta Pull out torque vs FL torque **Y-motor**  
 DOL Starting current vs FL current **7,38**  
 Star-Delta Starting current vs FL current **Y-motor**  
 Rotor Inertia [J] **0,009 kgm²**

Bearing DE **6206 2RZ**  
 Bearing NDE **6206 2RZ**


WI	Change	date	sign
Dutchi Motors B.V. P.O. Box 5390 NL-6802EJ Arnhem tel: +31-(0)26 - 3541 600 fax: +31-(0)26 - 3541 650		Description generated	date 10-jun-10
		dutchi.motors@dutchi.nl www.dutchi.com	