

Auswahltabellen/ Technischer Katalog

Drehstrommotoren Serie AMHE

Aluminiumgehäuse BG 71 – 160
Leistungen von 0,75 – 22,0 kW
Spannung: 230/ 400V – 400/ 690V, 50Hz
Drehzahlen: 3000, 1500, 1000 rpm

AEG IE2



High Efficiency Motors

Standards:

- IE2 nach IEC 60034-30; 2008 und IEC 60034-2-1; 2007
- Schutzart IP55 nach IEC 60034-5
- Umgebungstemperatur von -20° bis +40°C
- Klemmenkastenlage durch schraubbare Füße veränderbar
- Kabeleinführung variabel durch drehbaren Klemmenkasten um 90°
- Material Klemmenkasten:
BG 71 - 112 Kunststoff
BG 132 - 160 Aluminium

Optionen:

- Thermischer Wicklungsschutz PTC/ PTO
- Stillstandsheizung 230V, 25Watt
- Verstärkte Lagerung für indirekte Kupplung
- Vorgesehen für öldichte Ausführung

Type	kW	HP	min ⁻¹	M _N Nm	IE2η			cos φ	I _N 400V	I _A /I _N	M _A /M _N	M _S /M _N	M _K /M _N	J		
					50%	75%	100%							10 ⁻³ kgm ²	kg	
3000 min⁻¹ (2 poles)																
AMHE 71Z AA	2*	0.75	1	2865	2.5	75.0	78.1	79.4	0.71	1.9	5.2	3.1	3.0	3.1	0.69	8.2
AMHE 80Z AA	2	0.75	1	2900	2.5	77.3	78.5	80.5	0.78	1.7	7.0	3.6	3.4	3.6	0.7	9.5
AMHE 80Z BA	2	1.1	1.5	2880	3.6	79.5	81.2	81.5	0.78	2.5	6.8	3.6	3.4	3.6	0.89	11.1
AMHE 80Z CA	2*	1.5	2	2880	5.0	80.5	82.1	82.4	0.78	3.4	7.0	3.5	3.4	3.6	1.1	13.5
AMHE 90S AA	2	1.5	2	2880	5.0	81.0	82.8	82.8	0.80	3.2	8.1	3.6	3.1	4.0	1.56	14.0
AMHE 90L CA	2	2.2	3	2860	7.3	82.5	84.0	84.0	0.85	4.4	8.5	3.5	3.2	3.7	1.8	16.0
AMHE 100L AA	2	3	4	2920	9.8	84.1	85.8	85.5	0.84	5.9	8.0	3.5	3.0	4.0	4.05	22.8
AMHE 100L BA	2*	4	5.5	2920	13.1	85.2	86.4	86.1	0.86	7.8	8.2	3.3	3.0	3.8	4.1	22.8
AMHE 112M AA	2	4	5.5	2940	13.0	85.5	87.0	86.8	0.88	7.6	8.0	2.9	2.1	3.3	6.48	27.4
AMHE 112M BA	2*	5.5	7.5	2920	18.0	85.8	87.4	87.3	0.88	10.4	8.0	3.0	2.1	3.2	8.58	34.0
AMHE 112M CA	2*	7.5	10	2900	24.7	86.5	88.3	88.3	0.87	14.2	8.1	3.0	2.2	3.4	10.50	36.0
AMHE 132S YA	2	5.5	7.5	2900	18.1	86.0	88.0	87.9	0.89	10.2	7.3	2.7	2.3	3.2	14.0	46.0
AMHE 132S ZA	2	7.5	10	2900	24.7	86.3	88.6	88.4	0.89	13.8	7.5	2.8	2.5	3.3	16.0	53.0
AMHE 132M ZA	2	9.2	12.5	2920	30.1	88.4	89.9	90.0	0.87	16.9	8.8	3.2	3.0	3.8	17.5	58.0
AMHE 132M RA	2*	11	15	2920	36.0	88.1	90.0	89.7	0.90	19.8	7.5	2.8	2.6	3.4	17.5	58.0
AMHE 132M TA	2*	15	20	2920	49.1	88.9	90.6	90.3	0.89	27.0	7.5	3.0	2.8	3.5	21.0	61.0
AMHE 160M YA	2	11	15	2930	35.9	88.9	90.2	90.0	0.87	20.4	7.3	2.4	2.2	3.1	51.75	77.0
AMHE 160M ZA	2	15	20	2930	48.9	90.0	91.0	90.8	0.88	27.2	7.6	2.5	2.3	3.1	55.4	87.1
AMHE 160L ZA	2	18.5	25	2935	60.2	90.3	91.6	91.2	0.88	33.3	7.9	2.8	2.4	3.4	59.7	97.5
AMHE 160L TA	2*	22	30	2935	71.6	91.0	91.7	91.5	0.90	38.6	8.3	3.0	2.6	3.7	64.0	108.7

Type	kW	HP	min ⁻¹	M _N Nm	IE2η			cos φ	I _N 400V	I _A /I _N	M _A /M _N	M _S /M _N	M _K /M _N	J		
					50%	75%	100%							10 ⁻³ kgm ²	kg	
1500 min⁻¹ (4 poles)																
AMHE 80Z AA	4	0.75	1	1430	5	79.2	80.3	80.2	0.76	1.8	5.5	2.8	2.7	3	2.5	11.0
AMHE 90S AA	4	1.1	1.5	1430	7.3	81.4	82.7	82.5	0.77	2.5	6.1	4.0	3.9	4.1	3.73	16.4
AMHE 90L BA	4	1.5	2	1430	10	82.0	83.5	83.0	0.77	3.4	6.4	3.9	3.8	4.0	3.73	16.4
AMHE 100L AA	4	2.2	3	1450	14.5	84.0	85.3	85.1	0.74	5.1	6.0	3.2	3.0	3.4	5.58	22.4
AMHE 100L BA	4	3	4	1440	19.9	85.3	86.6	86.4	0.77	6.5	6.3	3.4	3.1	3.6	7.3	26.5
AMHE 112M AA	4	4	5.5	1450	26.3	86.0	87.3	87.1	0.78	8.5	6.1	3.1	2.8	3.3	13.3	30.4
AMHE 132S RA	4	5.5	7.5	1450	36.2	87.5	88.3	88.1	0.84	10.8	7.4	3.0	2.4	3.3	30.0	55.0
AMHE 132M TA	4	7.5	10	1450	49.4	88.5	89.4	89.2	0.85	14.4	7.4	3.0	2.4	3.3	36.0	65.0
AMHE 160M ZA	4	11	15	1460	71.9	89.4	90.3	90.1	0.82	22.0	6.9	2.3	2.1	2.9	105.0	108.0
AMHE 160L ZA	4	15	20	1460	98.1	90.6	91.2	91.0	0.84	29.0	7.4	2.5	2.2	3.1	120.7	114.0

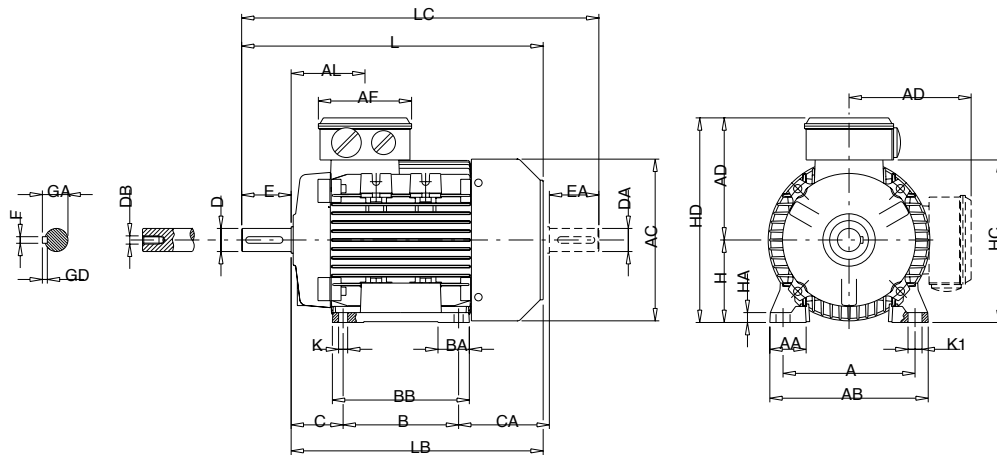
Type	kW	HP	min ⁻¹	M _N Nm	IE2η			cos φ	I _N 400V	I _A /I _N	M _A /M _N	M _S /M _N	M _K /M _N	J		
					50%	75%	100%							10 ⁻³ kgm ²	kg	
1000 min⁻¹ (6 poles)																
AMHE 90S AA	6	0.75	1	925	7.7	75.3	75.8	76.2	0.65	2.2	4.6	1.7	1.6	1.8	4.78	15.0
AMHE 90L BA	6	1.1	1.5	935	11.2	78.5	78.7	78.9	0.67	3.0	4.2	1.8	1.8	2.3	6.45	20.3
AMHE 100L AA	6	1.1	1.5	950	11.1	75.7	77.6	79.5	0.67	3.0	5.5	1.9	1.9	2.4	7.48	19.4
AMHE 100L BA	6	1.5	2	950	15.1	78.5	79.4	79.8	0.77	3.5	6.7	2.4	2.4	2.8	11.6	27.1
AMHE 112M AA	6	2.2	3	960	21.9	79.4	81.0	81.8	0.73	5.3	10.4	2.7	1.5	3.7	18.7	39.0
AMHE 132S YA	6	3	4	960	29.8	82.3	82.9	83.5	0.58	8.9	9.5	2.2	1.4	3.2	37.7	55.8
AMHE 132M YA	6	4	5.5	955	40.0	84.1	84.8	85.2	0.66	10.3	8.9	2.1	1.2	2.9	44.4	65.5
AMHE 132M TA	6	5.5	7.5	970	54.1	85.0	86.2	86.5	0.75	12.2	8.4	1.9	1.1	2.7	54.1	64.1
AMHE 160M YA	6	5.5	7.5	975	53.9	84.7	85.6	86.1	0.71	13.0	9.2	3.3	3.1	4.2	75.2	70.5
AMHE 160M ZA	6	7.5	10	970	73.8	85.8	87.3	87.5	0.78	15.8	7.7	3.0	2.8	3.8	103	96.6
AMHE 160L ZA	6	9.2	12.4	965	91.0	86.3	87.4	87.8	0.83	18.1	8.3	3.1	2.7	4.1	125	103
AMHE 160L TA	6	11	15	965	108.9	87.9	88.2	88.7	0.79	22.5	9.1	3.1	2.9	3.9	156	129

* Higher output (progressive motor)



IE2/ IE3 auf Anfrage/ on request

Serie AMHE Bauform/ Mounting B3



IEC DIN	Poles	kW	H h	A b	B a	C w ₁	K ¹⁾ s	AB f	BB e	CA	AD ²⁾	HD ²⁾ g ₄	AC m ₁	HC g
71	2	0.75	71	112	90	45	8	135	108	83	110	181	139	142
80	2 - 4	all	80	125	100	50	10	153	125	89	129	209	160	162
90S	2 - 4	all	90	140	100	56	10	170	150	116	138	228	180	181
90L	2 - 4	all	90	140	125	56	10	170	150	91	138	228	180	181
100L	2	all	100	160	140	63	11	192	166	110	145	245	196	198
	4	2.2	100	160	140	63	11	192	166	110	145	245	196	198
	4	3	100	160	140	63	11	192	166	144	145	245	194	198
112M	2	4 - 5.5	112	190	140	70	12.5	220	176	126	160	272	225	225
	2	7.5	112	190	140	70	12.5	220	176	148	160	272	222	225
	4	all	112	190	140	70	12.5	220	176	126	160	272	225	225
132S	2	5.5	132	216	140	89	12	256	180	134	194	326	248	261
	2	7.5	132	216	140	89	12	256	180	154	194	326	248	261
	4	5.5	132	216	140	89	12	256	180	134	194	326	248	261
132M	2	9.2 - 11	132	216	178	89	12	256	218	156	194	326	248	261
	2	15	132	216	178	89	12	256	218	207	194	326	248	261
	4	all	132	216	178	89	12	256	218	136	194	326	248	261
160M	2 - 4	all	160	254	210	108	14	320	270	180	238	398	317	316
160L	2 - 4	all	160	254	254	108	14	320	310	180	238	398	317	316

IEC DIN	Poles	kW	HA	K1 c	L k	LB	LC k ₁	AL	AF	BA m	AA n	D/DA d/d ₁	E/EA l/l ₁	F/FA u/u ₁	GD/GF	GA/GC t/t ₁	DB/DC ³⁾ d ₆ /d ₇
71	2	0.75	9	11	246	216	278	69	92	28	31	14	30	5	5	16	M5
80	2 - 4	all	9.5	14	272	232	319	79	116	28.5	34.5	19	40	6	6	21.5	M6
90S	2 - 4	all	11	15	317	267	372	85	116	28/53	37	24	50	8	7	27	M8
90L	2 - 4	all	11	15	317	267	372	85	116	28/53	37	24	50	8	7	27	M8
100L	2	all	12	17	366	306	433	91	116	38	44	28	60	8	7	31	M10
	4	2.2	12	17	366	306	433	91	116	38	44	28	60	8	7	31	M10
	4	3	12	17	400	340	467	91	116	38	44	28	60	8	7	31	M10
112M	2	4 - 5.5	15	19	388	328	456	92	116	46	48	28	60	8	7	31	M10
	2	7.5	15	19	410	350	478	92	116	46	48	28	60	8	7	31	M10
	4	all	15	19	388	328	456	92	116	46	48	28	60	8	7	31	M10
132S	2	5.5	17	20	445	365	523	100	133	45	59	38	80	10	8	41	M12
	2	7.5	17	20	465	385	543	100	133	45	59	38	80	10	8	41	M12
	4	5.5	17	20	445	365	523	100	133	45	59	38	80	10	8	41	M12
132M	2	9.2 - 11	17	20	505	425	583	120	133	45	59	38	80	10	8	41	M12
	2	15	17	20	556	476	634	120	133	45	59	38	80	10	8	41	M12
	4	all	17	20	485	405	563	120	133	45	59	38	80	10	8	41	M12
160M	2 - 4	all	23	18	608	498	668	146	150	65	76	42/28	110/60	12/8	8/7	45/31	M16/M10
160L	2 - 4	all	23	18	652	542	712	168	150	65	76	42/28	110/60	12/8	8/7	45/31	M16/M10

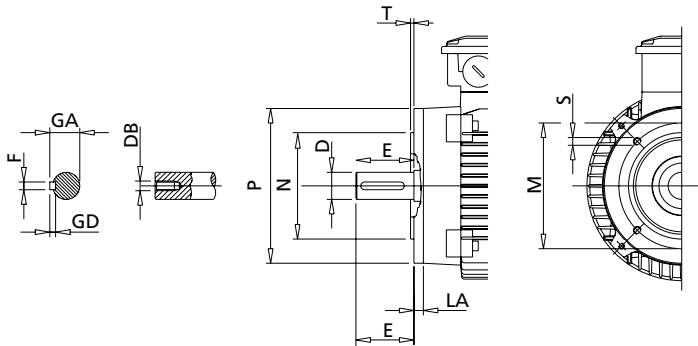
1) Schraubendurchgangsloch/ Clearance hole for screw

2) Maximale Entfernung/ Maximun distance

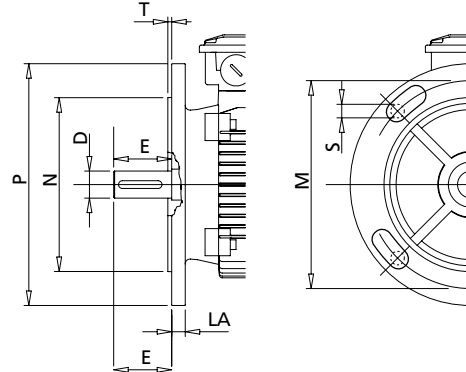
3) Zentrierbohrung nach DIN 332 Teil 2/ Centering holes in shaft extensions to DIN 332 part 2

Serie AMHE Bauform/ Mounting B14 / B5

IM B14

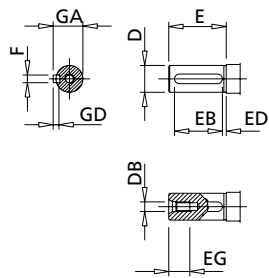


IM B5



IEC DIN	Kleiner Flansch/ Small flange B14						Großer Flansch/ Large flange B14						Flansch/ Flange B5					
	P a ₁	N b ₁	LA c ₁	M e ₁	T f ₁	S s ₁	P a ₁	N b ₁	LA c ₁	M e ₁	T f ₁	S s ₁	M e ₁	N b ₁	P a ₁	T f ₁	LA c ₁	S s ₁
56	80	50	8	65	2.5	M5	105	70	8	85	2.5	M6	100	80	120	2.5	7	M6
63	90	60	8	75	2.5	M5	120	80	8	100	2.5	M6	115	95	140	3	8	M8
71	105	70	8	85	2.5	M6	140	95	8	115	3	M8	130	110	160	3.5	10	M8
80	120	80	9	100	3	M6	160	110	8.5	130	3.5	M8	165	130	200	3.5	10	M10
90S-L	140	95	9	115	3	M8	160	110	9	130	3.5	M8	165	130	200	3.5	12	M10
100L	160	110	10	130	3.5	M8	200	130	12	165	3.5	M10	215	180	250	4	14	M12
112M	160	110	10	130	3.5	M8	200	130	12	165	3.5	M10	215	180	250	4	14	M12
132S-M	200	130	30	165	3.5	M10	250	180	12	215	4	M12	265	230	300	4	14	M12
160M-L	250	180	12	215	4	M12	300	230	12	265	5	M16	300	250	350	5	15	M16

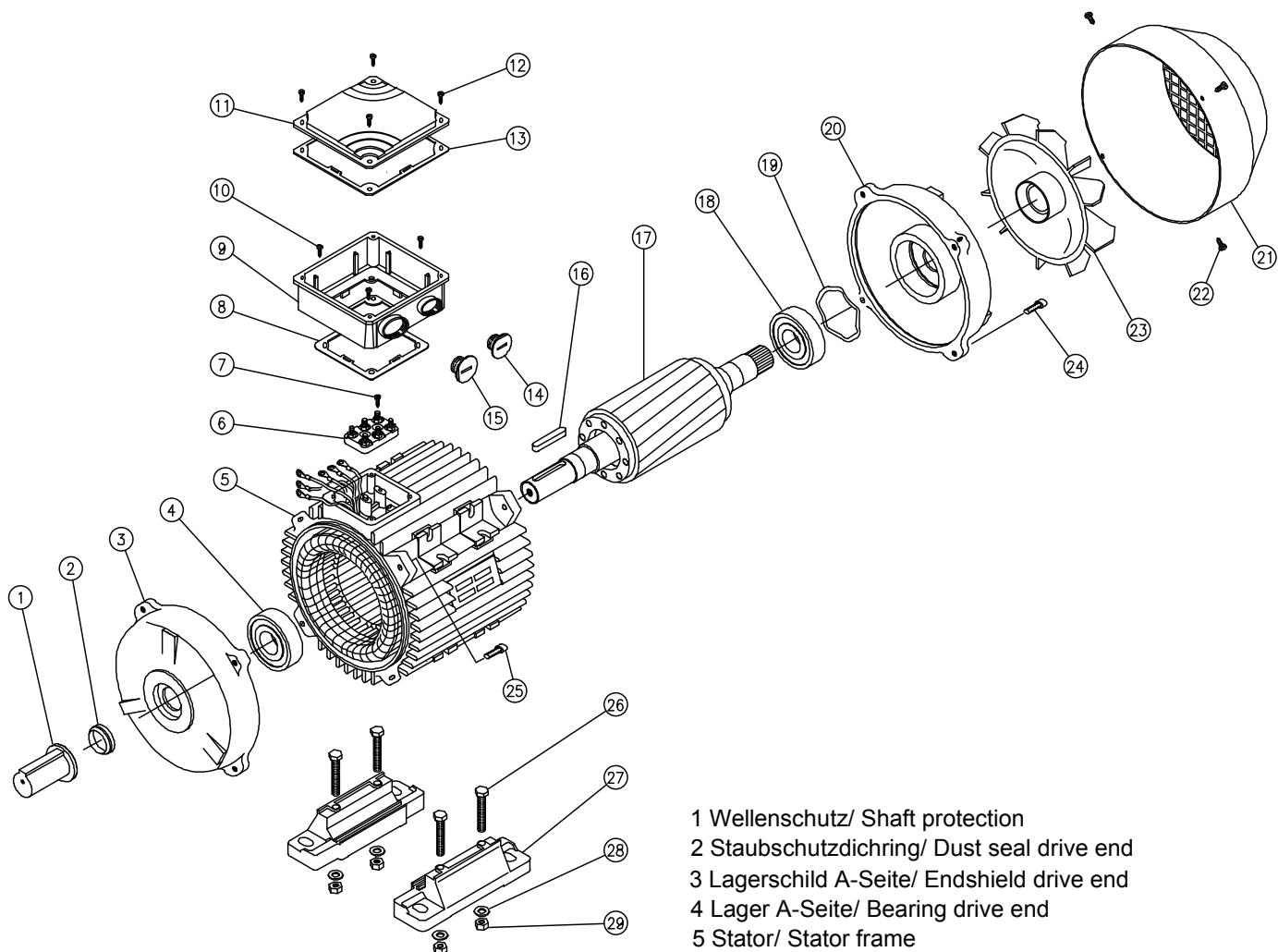
Welle/ Shaft



IEC DIN	D d	E l	F h9 u	GD	GA t	DB ₁₎ d ₆	EG	EB	ED
56	9 j6	20	3	3	10.2	M3	10	15	2.5
63	11 j6	23	4	4	12.5	M4	10	15	4
71	14 j6	30	5	5	16	M5	12.5	20	4
80	19 j6	40	6	6	21.5	M6	16	30	4
90S-L	24 j6	50	8	7	27	M8	19	40	4
100L	28 j6	60	8	7	31	M10	22	50	4
112M	28 j6	60	8	7	31	M10	22	50	4
132S-M	38 k6	80	10	8	41	M12	28	70	4
160M-L	42 k6	110	12	8	45	M16	36	100	4

1) Zentrierbohrung/ Centering holes in shaft extension to DIN 332 part 2

Serie AMHE Teileliste/ Spare parts



- 1 Wellenschutz/ Shaft protection
- 2 Staubschutzdichring/ Dust seal drive end
- 3 Lagerschild A-Seite/ Endshield drive end
- 4 Lager A-Seite/ Bearing drive end
- 5 Stator/ Stator frame
- 6 Klemmenbrett/ Terminal board
- 7 Schrauben Klemmenbrett/ Fixing srew terminal board
- 8 Dichtung/ Gasket terminal box
- 9 Klemmenkasten/ Terminal box
- 10 Schrauben/ Fixing srew terminal box
- 11 Deckel/ Terminal box lid
- 12 Schrauben/ Fixing srew terminal box lid
- 13 Dichtung/ Gasket terminal box lid
- 14 Blindverschraubung/ Blank gland plug
- 15 Blindverschraubung/ Blank gland plug
- 16 Keil/ Key
- 17 Rotor/ Rotor complete
- 18 Lager B-Seite/ Bearing non drive end
- 19 Federring B-Seite/ Pre-load washer
- 20 Lagerschild B-Seite/ Endshield non-drive end
- 21 Lüfterhaube/ Fan cover
- 22 Schrauben/ Fixing srew fan cover
- 23 Lüfter/ Fan
- 24 Schraube Schild B-Seite/ Fixing bolt shield non-drive end
- 25 Schraube Schild A-Seite/ Fixing bolt shield drive end
- 26 Schraube Motorfüße/ Fixing bolt motor feet
- 27 Motorfüße/ Motor feet
- 28 Scheibe Motorfüße/ Fixing washer motor feet
- 29 Mutter Motorfüße/ Fixing nut motor feet