

Technischer Katalog

Stirnvordstufe Serie PG - 3:1 Stirnschneckengetriebe Serie CMP



RIDUTTORI CON PRECOPPIA **CMP** **PRE-STAGE GEARBOXES** **CMP**



Indice	Index	Pag. Page
Caratteristiche tecniche	<i>Technical characteristics</i>	E2
Designazione	<i>Designation</i>	E2
Versioni	<i>Versions</i>	E2
Simbologia	<i>Symbols</i>	E2
Lubrificazione	<i>Lubrication</i>	E3
Carichi radiali	<i>Radial loads</i>	E4
Dati tecnici	<i>Technical data</i>	E5
Motori applicabili	<i>IEC Motor adapters</i>	E7
Dimensioni	<i>Dimensions</i>	E8
Accessori	<i>Accessories</i>	E10
Opzioni	<i>Options</i>	E10

Caratteristiche tecniche



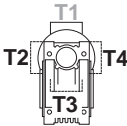
Technical characteristics

I riduttori a vite senza fine con precoppia della serie CMP hanno le seguenti caratteristiche principali: *Wormgearboxes with the pre-stage unit from the CMP range have the following characteristics :*

- Le precoppie sono costruite con carcassa in alluminio. *• The pre-stage units are made of aluminium.*
- I riduttori dal CM030 al CM090 sono costruiti con carcassa in alluminio, le altre grandezze in ghisa. *• The gearboxes, sizes CM030 to CM090 are made of aluminium, other sizes are made of cast iron.*
- Sia le precoppie che i riduttori sono forniti completi di lubrificante sintetico viscosità 320 cst a lunga durata. *• Both the pre-stage unit and the gearboxes are provided with long life synthetic lubricant, viscosity 320cst.*

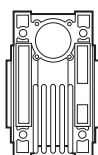
Designazione

Designation

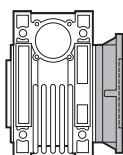
RIDUTTORE / GEARBOX								MOTORE / MOTOR				
CMP	63/050	U	58.3	P63	B14	B3	—	63A4	B14	230/400 V	50Hz	T1
Tipo Type	Grandezza Size	Versione Version	Rapporto Ratio	IEC	Forma costruttiva Version 	Pos. di montaggio Mounting position	Opzioni Options	Grandezza Size 	Forma costruttiva Version	Tensione Voltage	Frequenza Frequency	Pos. morsettiera Terminal box pos.
CMP	56/030	U FD FS FBD FBS FLD FLS	vedi tabelle see tables	56..	B14	B3 B8 B6 B7 V5 V6	VS PC	56..	B14	—	50Hz 60Hz	T1 T2 T3 T4 
	56/040			80..				80..				
	63/040											
	63/050											
	63/063											
	71/050											
	71/063											
	71/075											
	71/090											
	80/063											
	80/090											
	80/110											
80/130												

Versioni

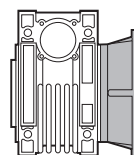
Versions



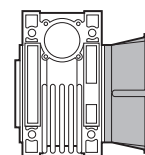
U



F



FB



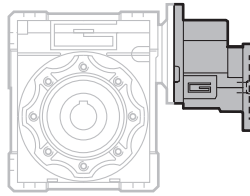
FL

Simbologia

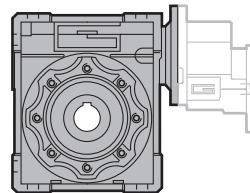
n_1	[min ⁻¹]	Velocità in ingresso / Input speed
n_2	[min ⁻¹]	Velocità in uscita / Output speed
i		Rapporto di riduzione / Ratio
P_1	[kW]	Potenza in entrata / Input power
M_2	[Nm]	Coppia in uscita in funzione di P_1 / Output torque referred to P_1

Symbols

sf		Fattore di servizio / Service factor
R_2	[N]	Carico radiale ammissibile in uscita / Permitted output radial load



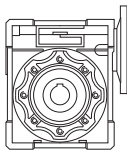
CMP			
56/030 56/040	63/040 63/050 63/063	71/050 71/063 71/075 71/090	80/063 80/075 80/090 80/110 80/130
Lubrificazione a vita Life lubricated			



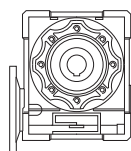
CMP	Quantità di olio (litri) / Oil quantity (liters)					
	B3	B8	B6	B7	V5	V6
56/030	0.04					
56/040 - 63/040	0.08					
63/050 - 71/050	0.15					
63/063 - 71/063 - 80/063	0.30					
71/075 - 80/075	0.55					
71/090 - 80/090	1.0					
80/110	3.0	2.2	2.5	2.5	3.0	2.2
80/130	4.5	3.3	3.5	3.5	4.5	3.3

Lubrificati a vita
Life lubricated

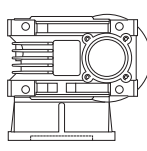
Posizioni di montaggio / Mounting positions



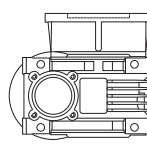
B3
(standard)



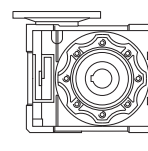
B8



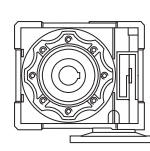
B6



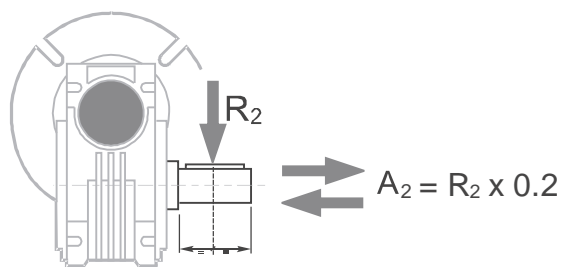
B7



V5



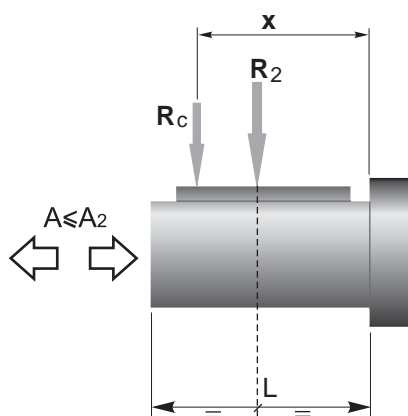
V6



n_2 [min ⁻¹]	R_2 [N]						
	CM040	CM050	CM063	CM075	CM090	CM110	CM130
35	2210	3095	4273	4937	5526	8842	10021
28	2381	3334	4603	5318	5953	9524	10794
23	2542	3559	4915	5678	6356	10170	11526
18	2759	3862	5334	6162	6897	11036	12507
14	3000	4200	5800	6700	7500	12000	13600

Quando il carico radiale risultante non è applicato sulla mezziera dell'albero occorre calcolare quello effettivo con la seguente formula:

When the resulting radial load is not applied on the centre line of the shaft it is necessary to calculate the effective load with the following formula:



$$R_c = \frac{R_2 \cdot a}{(b + x)} \leq R_{2MAX}$$

$$R \leq R_c$$

a, b = valori riportati nella tabella
a, b = values given in the table

	CM040	CM050	CM063	CM075	CM090	CM110	CM130
a	84	101	120	131	182	176	188
b	64	76	95	101	122	136	148
R_{2MAX}	3000	4200	5800	6700	7500	12000	13600

Dati tecnici

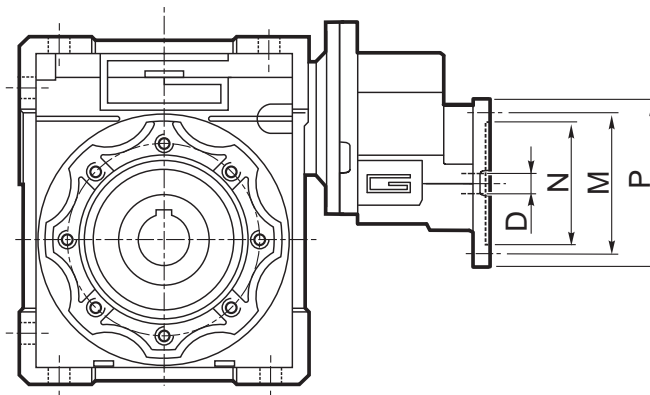
Technical data

P_1 [kW]	n_2 [min ⁻¹]	M_2 [Nm]	sf	i	CMP	IEC	P_1 [kW]	n_2 [min ⁻¹]	M_2 [Nm]	sf	i	CMP	IEC	
0.06							0.18							
56A4 (1400 min ⁻¹)	23	16	1.4	60	56/030	B14	63A2 (2800 min ⁻¹)	47	27	1.6	60	63/040	B14	
	19	18	1.5	75		B14		37	32	1.4	75		B14	
	16	21	1.3	90		B14		31	36	1.3	90		B14	
	12	25	0.9	120		B14		23	46	1.0	120		B14	
	12	28	1.9	120	56/040	B14		23	46	1.8	120	63/040	B14	
	9.3	33	1.4	150		B14		19	54	1.4	150		B14	
	7.8	37	1.2	180		B14		16	61	1.2	180		B14	
	5.8	42	0.9	240		B14		12	69	1.0	240		B14	
0.09							0.25							
56A2 (2800 min ⁻¹)	47	13	1.5	60	56/030	B14	63B4 (1400 min ⁻¹)	23	52	1.0	60	63/040	B14	
	37	15	1.5	75		B14		19	63	0.8	75		B14	
	31	17	1.3	90		B14		16	70	0.8	90		B14	
	23	20	1.0	120		B14		19	63	1.4	75		63/050	B14
	19	23	0.8	150	B14	16		71	1.4	90	B14			
	23	23	2.0	120	56/040	B14		12	87	1.1	120	B14		
	19	27	1.6	150		B14		9	101	0.9	150	B14		
	16	30	1.3	180		B14		9.3	107	1.5	150	63/063	B14	
	12	35	1.0	240		B14		7.8	113	1.4	180		B14	
	9.3	40	0.8	300	B14	5.8		136	1.0	240	B14			
	56B4 (1400 min ⁻¹)	23	24	0.9	60	56/030		B14	4.7	151	0.8		300	B14
	19	28	1.0	75	B14			63B2 (2800 min ⁻¹)	47	38	1.2	60	63/040	B14
16	31	0.8	90	B14	37		45		1.0	75	B14			
19	31	1.5	75	56/040	31		51		0.9	90	B14			
16	35	1.6	90		B14	31	51		1.7	90	63/050	B14		
12	43	1.3	120		B14	23	63		1.3	120		B14		
9.3	50	1.0	150		B14	19	75		1.0	150		B14		
7.8	55	0.8	180	B14	16	84	0.8		180	B14				
16	87	1.6	180	56/040	B14	16	87		1.6	180	63/063	B14		
12	104	1.2	240		B14	12	104		1.2	240		B14		
9.3	120	1.0	300		B14	9.3	120		1.0	300		B14		
71A4 (1400 min ⁻¹)	23	74	1.2		60	56/040	B14		71A4 (1400 min ⁻¹)	23		74	1.2	60
19	87	1.0	75	B14	19		87			1.0	75	B14		
16	98	1.0	90	B14	16		98	1.0		90	B14			
16	98	1.9	90	56/040	B14		16	98		1.9	90	71/063	B14	
12	125	1.4	120		B14	12	125	1.4		120	B14			
9.3	148	1.1	150		B14	9.3	148	1.1		150	B14			
7.8	157	1.0	180		B14	7.8	157	1.0		180	B14			
7.8	169	1.4	180	63/050	B14	7.8	169	1.4		180	71/075	B14		
5.8	201	1.0	240		B14	5.8	201	1.0		240		B14		
4.7	225	0.9	300		B14	4.7	225	0.9		300		B14		
5.8	217	1.7	240		63/063	B14	5.8	217		1.7		240	71/090	B14
4.7	251	1.3	300	B14		4.7	251	1.3		300	B14			
4.7	101	0.8	150	B14		4.7	101	0.8	150	B14				
5.8	90	1.5	240	B14		5.8	90	1.5	240	B14				
4.7	101	1.3	300	B14	4.7	101	1.3	300	B14					

Dati tecnici

Technical data

P_1 [kW]	n_2 [min ⁻¹]	M_2 [Nm]	sf	i	CMP	IEC	P_1 [kW]	n_2 [min ⁻¹]	M_2 [Nm]	sf	i	CMP	IEC	
0.37							0.75							
71A2 (2800 min ⁻¹)	47	57	1.3	60	71/050	B14	80A2 (2800 min ⁻¹)	47	118	1.2	60	80/063	B14	
	37	68	1.1	75		B14		37	144	1.0	75		B14	
	31	76	1.1	90		B14		31	161	1.0	90		B14	
	31	80	2.1	90	71/063	B14		31	166	1.5	90	80/075	B14	
	23	101	1.5	120		B14		23	203	1.2	120		B14	
	19	117	1.2	150		B14		23	218	1.8	120	80/090	B14	
	16	129	1.1	180		B14			19	261	1.5		150	B14
	16	134	1.6	180	71/075	B14		16	295	1.2	180		B14	
	12	164	1.2	240		B14		16	313	2.0	180		80/110	B14
	9.3	189	1.0	300		B14			12	374	1.4	240		B14
12	179	1.7	240	71/090	B14	9.3	437	1.1	300	B14				
9.3	204	1.3	300		B14	12	393	2.2	240	80/130	B14			
71B4 (1400 min ⁻¹)	23	109	0.8	60	71/050	B14	80B4 (1400 min ⁻¹)	23	224		0.8	60	80/063	B14
	19	129	0.7	75		B14		23	236	1.1	60	80/075		B14
	23	111	1.5	60	71/063	B14		19	280	0.9	75		B14	
	19	133	1.2	75		B14		16	318	0.9	90	B14		
	16	145	1.3	90		B14		23	236	1.9	60	80/090	B14	
	12	185	0.9	120		B14			19	288	1.5		75	B14
	9.3	220	0.8	150	B14	16		318	1.7	90	B14			
	12	191	1.5	120	71/075	B14		12	399	1.2	120		B14	
	9.3	220	1.1	150		B14		9.3	483	0.9	150	B14		
	7.8	250	0.9	180		B14		9.3	506	1.6	150	80/110	B14	
	7.8	263	1.5	180	71/090	7.8			571	1.2	180		B14	
	5.8	321	1.1	240		B14			5.8	688	0.9	240	B14	
	4.7	371	0.9	300	B14	4.7			813	1.1	300	80/130	B14	
	0.55							1.1						
71B2 (2800 min ⁻¹)	47	84	0.9	60	71/050	B14	80B2 (2800 min ⁻¹)	47	173	0.8	60	80/063	B14	
	37	101	0.7	75		B14		47	178	1.3	60		80/075	B14
	31	113	0.8	90		B14		37	214	1.0	75			B14
	47	87	1.7	60	71/063	B14		31	243	1.0	90	B14		
	37	106	1.3	75		B14		23	297	0.8	120	B14		
	31	118	1.4	90		B14		23	320	1.3	120	80/090	B14	
	23	151	1.0	120		B14			19	383	1.0		150	B14
	19	174	0.8	150	B14	16		432	0.8	180	B14			
	19	172	1.3	150	71/075	B14		16	459	1.4	180		80/110	B14
	16	199	1.1	180		B14			12	549	1.0	240		B14
12	243	0.8	240	B14		9.3	642		0.8	300	B14			
16	216	1.6	180	71/090	B14	12	576		1.5	240	80/130	B14		
12	266	1.2	240		B14	9.3	664	1.2	300	B14				
9.3	304	0.9	300		B14	80A4 (1400 min ⁻¹)	23	164	1.0	60	80/063	B14		
12	266	1.2	240	B14	19		197	0.8	75	B14				
9.3	304	0.9	300	B14	16		216	0.9	90	B14				
23	173	1.6	60	80/075	B14		23	173	1.6	60	80/075	B14		
19	205	1.2	75		B14		19	205	1.2	75		B14		
16	233	1.2	90		B14		16	233	1.2	90		B14		
12	284	1.0	120		B14		12	284	1.0	120		B14		
12	293	1.6	120	80/090	B14		12	293	1.6	120	80/090	B14		
9.3	355	1.3	150		B14		9.3	355	1.3	150		B14		
7.8	392	1.0	180		B14		7.8	392	1.0	180		B14		
7.8	419	1.7	180	80/110	B14		7.8	419	1.7	180	80/110	B14		
5.8	504	1.2	240		B14		5.8	504	1.2	240		B14		
4.7	585	1.0	300		B14		4.7	585	1.0	300		B14		
5.8	522	1.9	240	80/130	B14		5.8	522	1.9	240	80/130	B14		
4.7	597	1.4	300		B14	4.7	597	1.4	300	B14				
7.8	864	1.2	180	80/130	B14	7.8	864	1.2	180	80/130	B14			
5.8	1044	0.9	240		B14	5.8	1044	0.9	240		B14			
4.7	1193	0.7	300		B14	4.7	1193	0.7	300		B14			
4.7	597	1.4	300		B14	4.7	597	1.4	300		B14			



CMP	IEC	N	M	P	D	i (i ₁ x i ₂)							
						60 (3x20)	75 (3x25)	90 (3x30)	120 (3x40)	150 (3x50)	180 (3x60)	240 (3x80)	300 (3x100)
56/030	56 B14	50	65	80	9								
56/040						B	B	B	B				
63/040	63 B14	60	75	90	11								
63/050						B	B	B					
63/063						BS	BS	BS	B	B	B		
71/050	71 B14	70	85	105	14								
71/063						B	B	B					
71/075						B	B	B	B				
71/090						BS	BS	BS	B	B	B		
80/063	80 B14	80	100	120	19								
80/075													
80/090						B	B	B					
80/110						BS	B	B	B	B	B		
80/130						BS	BS	BS	BS	B	B	B	B

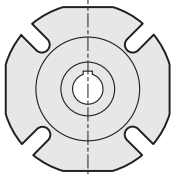
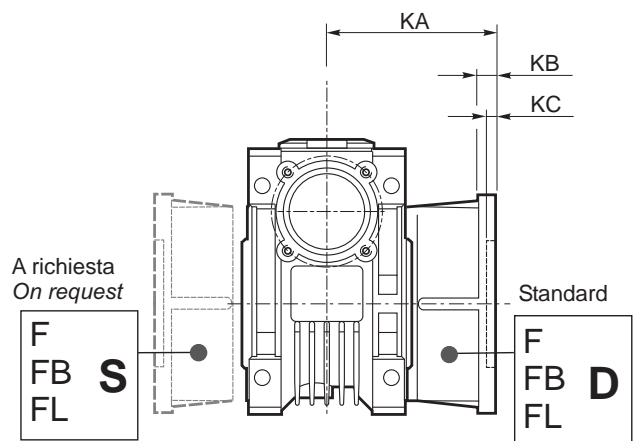
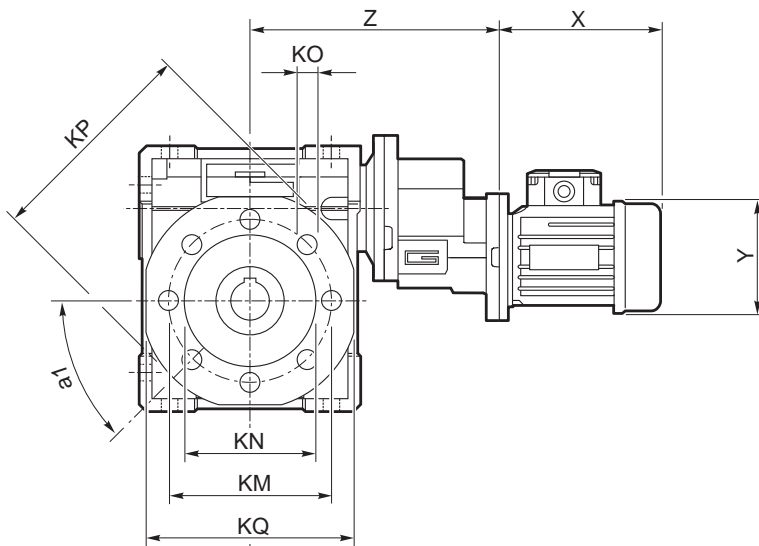
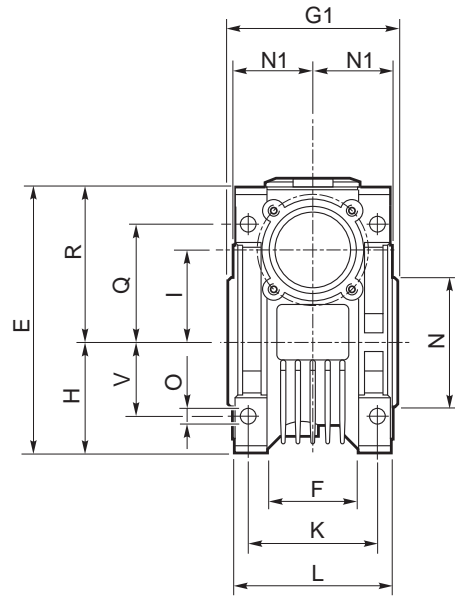
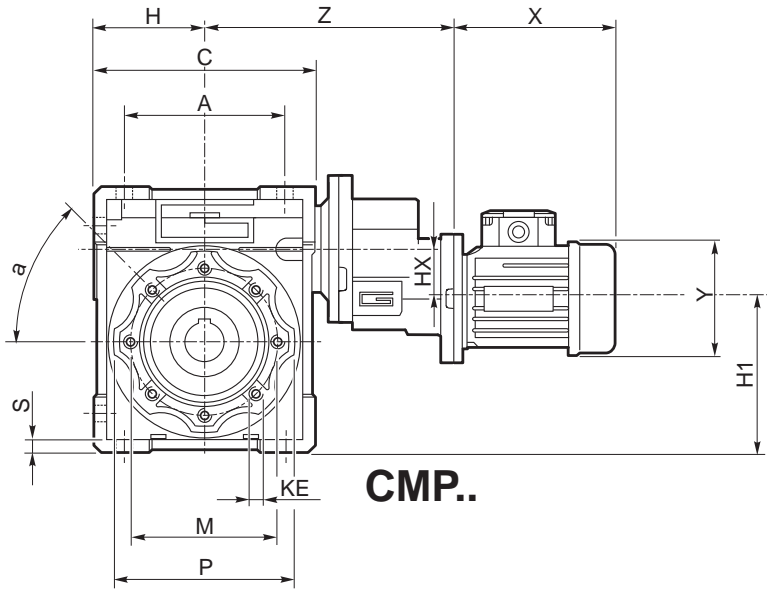
N.B.
Le aree evidenziate in grigio indicano l'applicabilità della corrispondente grandezza motore.
N.B. Grey areas indicate motor inputs available on each size of unit.

B = Boccola di riduzione in acciaio (vedi pag. S6)
B = Metal shaft sleeve (see page S6)

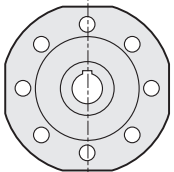
CMP.. - CMP..F - CMP..FB - CMP..FL															
	A	C	D _{H8}	E	F	G1	H	H1	HX	I	K	L	M	N _{h8}	N1
56/030	54	80	14	97	32	63	40	39.5	30.5	30	44	56	65	55	29
56/040 63/040	70	100	18 (19)	121.5	43	78	50	59.5	30.5 30.5	40	60	71	75	60	36.5
63/050 71/050	80	120	25 (24)	144	49	92	60	79.5 90	30.5 41	50	70	85	85	70	43.5
63/063 71/063 80/063	100	144	25	174	67	112	72	91.5 94 94	30.5 41 41	63	85	103	95	80	53
71/075 80/075	120	172	28	205	72	120	86	120	41 41	75	90	112	115	95	57
71/090 80/090	140	205	35	238	74	140	103	152	41 41	90	100	130	130	110	67
80/110	170	252.5	42	295	—	155	127.5	196.5	41	110	115	144	165	130	74
80/130	200	292.5	45	335	—	170	147.5	216.5	41	130	120	155	215	180	81

CMP.. - CMP..F - CMP..FB - CMP..FL														
	O	P	Q	R	S	T	V	Z	KE	a	b	t	Kg	
56/030	6.5	75	44	57	5.5	21	27	124	M6x11(n.4)	—	5	16.3	2.1	
56/040 63/040	6.5	87	55	71.5	6.5	26	35	139 142	M6x8(n.4)	45°	6	20.8	3.2 3.3	
63/050 71/050	8.5	100	64	84	7	30	40	152 169	M8x10(n.4)	45°	8	28.3	4.5 5.5	
63/063 71/063 80/063	8.5	110	80	102	8	36	50	167 184 195	M8x14(n.8)	45°	8	28.3	7.2 8.2 9.0	
71/075 80/075	11	140	93	119	10	40	60	201.5 212.5	M8x14(n.8)	45°	8	31.3	11.0 11.8	
71/090 80/090	13	160	102	135	11	45	70	218.5 229.5	M10x18(n.8)	45°	10	38.3	15.0 15.8	
80/110	14	200	125	167.5	14	50	85	260	M10x18(n.8)	45°	12	45.3	37.8	
80/130	16	250	140	187.5	15	60	100	280	M12x21(n.8)	45°	14	48.8	60.8	

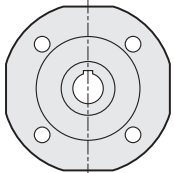
	CMP..F								CMP..FB								CMP..FL								
	a1	KA	KB	KC	KM	KN _{H8}	KO	KP	KQ	KA	KB	KC	KM	KN _{H8}	KO	KP	KA	KB	KC	KM	KN _{H8}	KO	KP	KQ	
56/030	90°	54.5	6	4	68	50	6.5(n.4)	80	70	—	—	—	—	—	—	—	—	—	—	—	—	—	—	—	—
56/040 63/040	45°	67	7	4	80-94	60	9(n.4)	110	95	80	9	5	115	95	9.5(n.4)	140	97	7	4	80-94	60	9(n.4)	110	95	
63/050 71/050	45°	90	9	5	90-110	70	11(n.4)	125	110	89	10	5	130	110	9.5(n.4)	160	120	9	5	90-110	70	11(n.4)	125	110	
63/063 71/063 80/063	45°	82	10	6	150-160	115	11(n.4)	180	142	98	11	5	165	130	11(n.4)	200	112	10	6	150-160	115	11(n.4)	180	142	
71/075 80/075	45°	111	13	6	165-178	130	14(n.4)	200	170	—	—	—	—	—	—	—	—	—	—	—	—	—	—	—	
71/090 80/090	45°	111	13	6	175-188	152	14(n.4)	210	200	—	—	—	—	—	—	—	—	—	—	—	—	—	—	—	
80/110	45°	131	15	6	230	170	14(n.8)	280	260	—	—	—	—	—	—	—	—	—	—	—	—	—	—	—	
80/130	45°	140	15	6	255	180	16(n.8)	320	290	—	—	—	—	—	—	—	—	—	—	—	—	—	—	—	



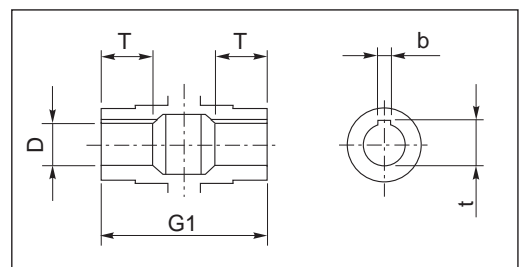
CMP..F (../030 - ../090)
CMP..FL (../030 - ../063)



CMP..F (../110 - ../130)



CMP..FB (../040 - ../063)

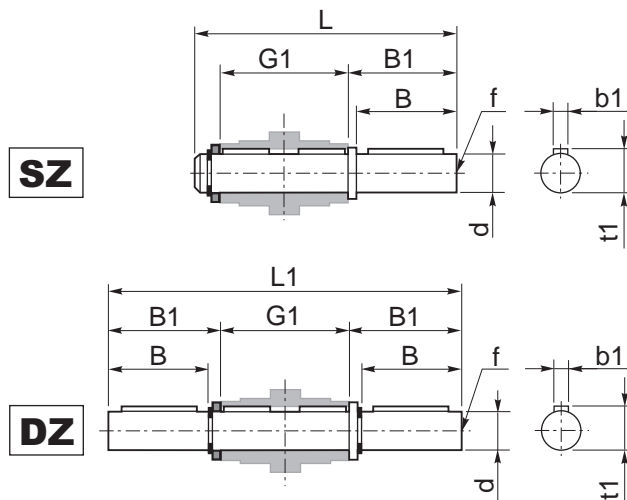


Albero lento cavo / Hollow output shaft

Albero lento semplice e doppio

CMP	d _{h6}	B	B1	G1	L	L1	f	b1	t1
56/030	14	30	32.5	63	102	128	M6	5	16
56/040 63/040	18	40	43	78	128	164	M6	6	20.5
63/050	25	50	53.5	92	153	199	M10	8	28
63/063 71/063 80/063	25	50	53.5	112	173	219	M10	8	28
71/075 80/075	28	60	63.5	120	192	247	M10	8	31
71/090 80/090	35	80	84.5	140	234	309	M12	10	38
80/110	42	80	84.5	155	249	324	M16	12	45
80/130	45	80	85	170	265	340	M16	14	48.5

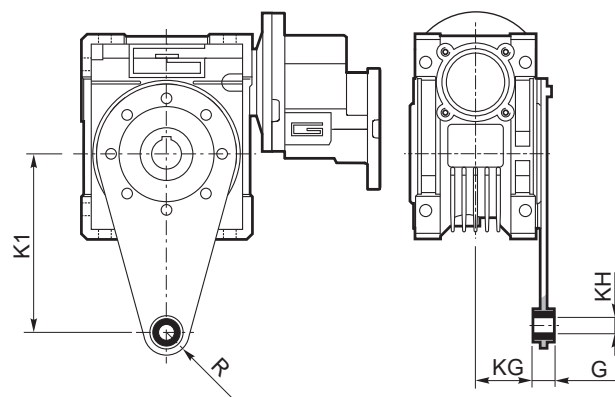
Single and double output shaft



Braccio di reazione

CMP	K1	G	KG	KH	R
56/030	85	14	23	8	15
56/040 63/040	100	14	31	10	18
63/050	100	14	38	10	18
63/063 71/063 80/063	150	14	47.5	10	18
71/075 80/075	200	25	46.5	20	30
71/090 80/090	200	25	56.5	20	30
80/100	250	30	62	25	35
80/130	250	30	69	25	35

Torque arm

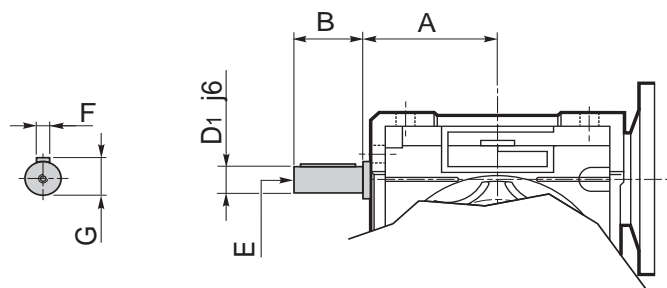


Opzioni

Options

VS - Vite sporgente / Extended input shaft

CMP	A	B	D _{1 j6}	E	F	G	M
56/030	45	20	9	M4	3	10.2	47
56/040 63/040	53	23	11	M5	4	12.5	54.5
63/050	64	30	14	M6	5	16	62.5
63/063 71/063 80/063	75	40	19	M6	6	21.5	73
71/075 80/075	90	50	24	M8	8	27	79
71/090 80/090	108	50	24	M8	8	27	94
80/100	—	—	—	—	—	—	95
80/130	—	—	—	—	—	—	100



PC - Coperchio di protezione / Plastic cover

